

Chapter Six

MAN THE ELECTROMAGNETIC ANIMAL

We will investigate in this chapter the facts surrounding man and his biological electrical energies. Man is composed, as are animals, rodents, seeds, plants, and all biological systems, of the basic atom which in part is a small magnet. As atoms collect to produce molecules and molecules form to make materials, substances, matter, all are allied and are, in fact, the fundamental basis for man's existence. They make up man's body, system, and are his very life itself.

The electrical system of man and all biological systems is a complex electrical carrier, some still unknown to man. As research continues we are becoming aware how these electrical currents govern man's life and the lives of plants, animals, rodents, and other living systems.

Of all the complexes of man's electrical biomagnetic system the brain and mind stand out as the master computer. The brain and mind are an electrochemical master control and exchange system acting to govern a good part, although not totally, of the electromagnetic complex found to exist in living systems.

The use and application of a magnet's energies, magneto magnetic, biomagnetic energies, to the living system can and will effect certain changes. When we know how these affect man they can then be directed and programmed to assist in the correction of many complaints existing in the electrochemical system of man's organs, blood, nerves, heart and all parts and divisions of man's biological living system. This will be a tremendous step in the control of illnesses or human restrictions toward living a more normal life when afflicted by illness, disfigurement, loss of limbs, or other limiting factors.

It would require a number of books to elaborate in detail all

of our experiments and findings in the bioelectrical activities within the body of man. At a later time we may present another book with more of our research findings on the magnetic effects to the living system.

In all scientific investigations when a discovery is made it is of the utmost importance to understand why it happened, not simply apply it for the results it can afford. Making a true discovery in science is good, but to properly understand what your discovery does should be of the utmost importance. We mentioned earlier that the Japanese are making magnetic bracelets and prescribing them for all sorts of human ailments. While the bands have made what appears to be certain improvements in a number of cases when applied to the human body, the Japanese manufacturers and scientists lack the knowledge of why this has taken place. This is evident based on papers they have offered on medical findings. These medical findings lack the proper scientific investigations into the technical reasons why these improvements have been experienced.

Actually, you can take a child's magnet and place it at points on the human body and obtain reactions, certain amounts of effects to certain disorders. However, unless you understand why this takes place, then nothing has been done to advance the position or understanding the laws behind this effect. We hope to cover this in part in this book.

While our research has included many fields of investigation over many years, we have primarily restricted our major work to animals and biological systems. When we apply our findings to the work being done by many other dedicated scientists in this and related fields, we see there is a direct relationship between our work and the work being conducted by other scientists. The research results we present in part should provide a valuable tool as to experiences, experiments, and results obtained for more thorough understanding of new basic laws we have developed from the effects of use and application of magnetic fields and energies. Only now are we beginning to grasp a more complex understanding for the application of these fields and energies to obtain desired and planned results.

MAN'S ELECTROMAGNETIC ENVIRONMENT

Man is affected by incoming electromagnetic energies as those coming from outer space, the moon, the sun, and the other major planets. These energies combine in various ways to affect man and every living biological system on the earth. Those creatures that live beneath the earth, in the seas, lakes, rivers, are all affected by these unseen and normally undetectable energies that continually bombard the earth.

The moon affects the rise and fall of the tides, as does the sun; and when the moon and the sun's energies are combined, when they are in alignment, they act to exert their maximum pull on the earth, producing abnormally high tides. Not only are all biological forms of life, including man, affected by the geophysical properties, but segments of the earth also undergo many forms of pull, strain and stress.

Man, like all living biological systems, experiences changes in these pulls, strains and stresses that are a result of these bodies from outer space and their surrounding electromagnetic fields and gravitational forces.

Man is an electromagnetic animal and is subject to those forces that affect all forms of life existing on earth. Man's electromagnetic system is contained within his biophysical makeup and affects the total behavior of not only the body but also in many cases the changes in mental activities and the electrical biochemical operation of his system.

We are aware of the numerous defensive shields surrounding the earth's atmosphere which protect man from the deadly rays of radioactivity from the sun's radiation. These shields are electromagnetic and have an energy that adds to man's environmental electromagnetic environment, adding also to the effects on his biological system.

In the past few years, gravity, as known on earth, has been discovered to travel in energy waves. Gravity is a form of electromagnetic and physical magnetic results. Without gravity our blood would not circulate the same as it now does. Therefore, each of the forces exerted on mankind, on earth plays an important part

in man's electromagnetic biological health, atmosphere and environment. When we add all of these external electromagnetic energies to man's internal electromagnetic energies, since man is himself an electromagnetic animal, we find man and his surroundings are subject to tremendous magnetic pressures, strains and stresses. If we can understand, even in a small way, how to harness some of these natural forces and apply them to aid mankind we have at least started to advance our understanding of these natural forces that affect the entire biophysical and biological atmosphere of man.

Nature presents some remarkable evidence of the effects the moon's and sun's energies have on living systems. Take for example the oyster. The following experiment has been conducted by a number of researchers who are exploring biomagnetic fields and their energies. Taking a number of oysters and placing them in tanks far inland and underground where they could not possibly sense outside happenings, the oyster still opened and closed their shells in perfect rhythm with the rise and fall of the ocean's tides. This occurred although the oysters were moved miles from the ocean. The energy force from the moon, the magnetic and electromagnetic energy of the moon's gravitational force fields acted to provide the oysters with the information, stress and strain, that caused them to react as though they were in or close to the ocean.

Consider that a magnet's energies cause a more rapid germination of seeds when exposed to the fields of a magnet and when planted present these facts repeatedly. Consider also that the seeds are organic in nature and have enzyme systems. Life, even in a suspended form, before the forming of the embryo, is influenced by electromagnetic environment. Any electromagnetic energy directed to a life system affects the protein, amino acids, and enzymes. Further, we see genetic changes as a direct result of magnetic exposures to the living system that are laboratory reproducible. An improper application of magnetic force to that system will produce mutant, defective genetic results, while the proper application will produce genetic changes for a better end result.

Research is now underway in several leading hospitals to show that man's brain is subject to severe changes when exposed to external minor voltages and currents. It has been found that the front of the skull is negative in electrical potential and the back

of the skull is positive in nature. When small electrodes are attached to the front and back of the head and small voltages and currents are applied—positive to the back, negative to the front—there is a feeling of well-being. However, should we reverse the voltage and currents quickly, unconsciousness will result immediately.

Electrosleep is the result of applying different frequencies of alternating energy to the brain by small electrodes. This produces sleep until the currents of frequency application are removed. Electrosleep can be used to assist man or animal to sleep while undergoing minor operations. It also has its use in psychological treatment and other research applications. The Russians have pursued this type of research for years, and now the United States and other nations are finally researching its uses and applications.

The above types of energies and other forms of applied voltages, currents, alternating frequencies, magnetic, and electromagnetic energies are now being researched in laboratories throughout the world. Much has been discovered about the effects these applied energies produce on plant, animal, and man.

Magnetic fields that are lower than the earth's one-half a gauss are found in space after leaving the earth's magnetic fields. This energy assisted mice taken into space to grow faster, but the second generation of mice were found to have low vitality and strength and died young. Their organs were found to be affected when they were contained in a weaker magnetic field during their youth. Tests indicated clearly that their organs were poorly developed, their livers and kidneys malformed, and many developed malignant tumors in various parts of their tissues.

Here we see a clue to malignant developments that result in many types and kinds of cancers and tumors. In the study of cancers and tumors there is more than sufficient evidence to indicate that when a cell membrane that retains the cell's shape and form weakens it can be the first cancer cell. We will discuss this in more detail later.

A number of years ago scientists in the U.S.S.R. started to investigate the effects of sunspots and magnetic storms on human behavior, studying patients in hospitals suffering from blood and heart complaints. Their discoveries acted to create interest in the external electromagnetic effects on man. Interest is now beginning

in the U.S. and other countries that realize there is a direct relation between sunspots and magnetic storms on the health of man.

The Soviet scientists designed shielded rooms and changed medication to the heart cases, those suffering nerve conditions and blood ailments. This procedure was used to protect the patients against electromagnetic harmful effects found to occur in cases from the effects of sunspots and magnetic storms.

It has been discovered that pulsing waves or fields of electromagnetic energy in factories and plants can cause great harm to the living system and also to the mind. Large transformers, pulse coils, autotransformers, A.C. generators, all show dangers to the workers. The pulsating generators may be considered to be the most dangerous of all, producing effects on the workers which result in harmful complaints. In 1969 reports were made public by Dr. Karel H. Marha, Institute of Industrial Hygiene and Occupational Diseases, Praha, Srobarova, Czechoslovakia showing effects to the workers. The complaints reported included decrease in sexual potency, headaches, memory and hearing losses, and changes in menstrual cycles. Additional human disorders have been noted and identified since that time, as well as several years prior to that time. The dangers of microwaves, such as radar, microwave ovens, and other similar devices, can also cause great harm depending on the energy leaking, the frequency and power generated, as well as the time of exposure.

The proper harnessing of these mentioned forms of electromagnetic energies can result in outstanding discoveries to help mankind. Our laboratory findings substantiate this objective.

It is possible to design from a harmful pulse generator a device to dissolve unwanted tissue. Tumors may be dissolved as well as other growths within or without the body. Our laboratory has made a number of research instruments that have acted to dissolve unwanted mass in animal bodies. From these research findings have come information and knowledge of how pulsing electromagnetic energies can be new and important tools for medical work, surgical procedures, and of equal importance to avoid surgical procedures.

As mentioned earlier a number of firms in Japan are building alternating current equipped chairs, mattresses, pillows, and hand-held devices that are placed against the body to afford a host of reliefs and cures, according to the literature they send with these

instruments. These do-it-yourself, home cure instruments supply a 60 pulse per second magnetic, alternating magnetic energy, and can affect the system in many harmful ways. They have obtained many good results, meaning certain amounts of relief to a number of disorders, yet they do not properly understand that their instruments can have harmful as well as good results. This is indicated in discussing with them their papers and reports they offer in evidence of the instrument's value to health.

Our laboratory findings give proper understandings concerning these devices built by the Japanese manufacturers. An adaptation of these devices in line with our discoveries would not only benefit but would offer new and greater approaches in proper medical testing and results for new scientific instruments that could be accepted by many nations.

The research work on instrument development in England, France, and Germany is evident by a number of groups attempting to design, build, and sell magnetic instruments to relieve human complaints. Again, these instruments are based on the pulsing frequency type generators, generating electromagnetic energies and applying them to certain parts of the body for relief of certain disorders. A number of these instruments have obtained positive results, yet these manufacturers fail to understand the nature of the energies they are working with or how to program for expected results. This book is directed to professional men and women and students who wish to further their research of applied magnetic forces, fields and energies in an intelligent and understandable manner. Such persons must be willing to leave behind them the outmoded, incorrect theories and concepts of magnetism. Our laboratory findings and discoveries of new laws and concepts of applied magnetic forces can now be used to advance new developments and still more discoveries in advancing the sciences. The future holds many great and new discoveries in all sciences from our new understanding of magnetic energies and their programmed effects.

EXTERNAL ELECTROMAGNETIC FORCES AND MAN

In our continued study of the electromagnetic forces that are directed on mankind from outer space, we find one of the greatest effective generators of harmful, as well as useful and healthful,

energies are the rays of the sun. The sun's rays are electromagnetic in nature and effects.

The sun's rays, on direct exposure to the skin of animals and man, can cause skin cancer if the exposure is prolonged. Sunlight and direct exposure to ultraviolet rays can also cause certain types of skin cancers. Why the sun's direct rays or the direct rays of ultraviolet light cause certain types of skin cancer is not too well known or understood. We point out that ultraviolet rays or light are also electromagnetic energies. The frequency of the sun's light rays, white light, and that of ultraviolet rays differ. The white light that comes from the sun contains all of the frequencies within the light spectrum and many that go beyond this range, and other frequencies that start before the sun's white light frequencies start. There is a difference in the number of cycles per second in each wavelength and micron. The difference is the number or the frequency of the cycles per second of energy that goes to produce, make, and/or present these many different types of electromagnetic energy.

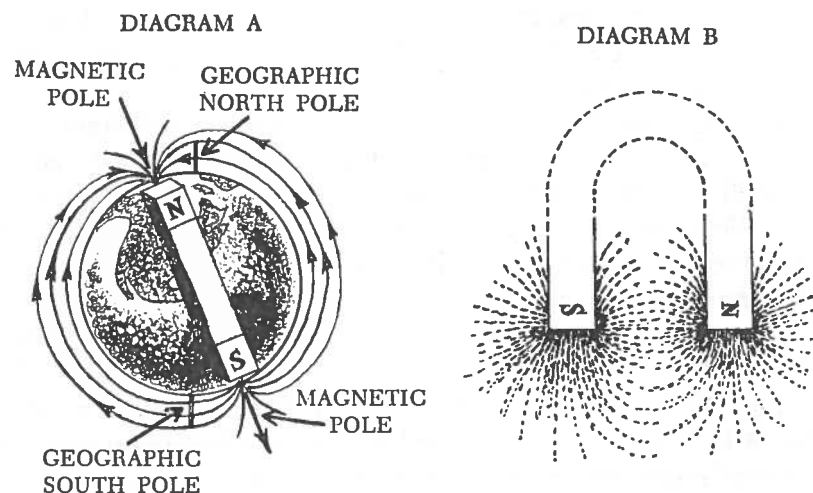
We believe others will agree with this finding at least in part and that it is the sun's reactions and also ultraviolet rays' reaction on the skin of man and/or animals that cause "oxidized cholesterol" of the skin. We know there are many biological effects of cholesterol oxidation. One result is cholesterol alfaoxide. This is known to be a cancer-causing chemical, so when exposed to certain natural forms of energies coming from outer space, as in the case of sunlight, we can see there is a direct possibility that when too much of this energy form is absorbed by the skin the result is skin cancer or deterioration of the skin.

Man is continually bombarded with visible and invisible electromagnetic energies that have a direct bearing on his life, mental attitudes, health and welfare. Man is, in fact, an electromagnetic animal in every respect, living in and surrounded by an electromagnetic environment over which he has little control.

Chapter Seven

MISTAKEN CONCEPTS OF MAGNETISM AND ITS BIOLOGICAL APPLICATION

We now present some of the theories of the magnetic fields that surround the earth and a magnet. We give a drawing of the earth, Diagram A, that shows a bar magnet superimposed on the earth, and in turn shows how the magnet and the earth's magnetism are similar in poles and flow direction of the magnetic energy. This theory is incorrect as we shall explain, yet it is still taught today in this incorrect form.



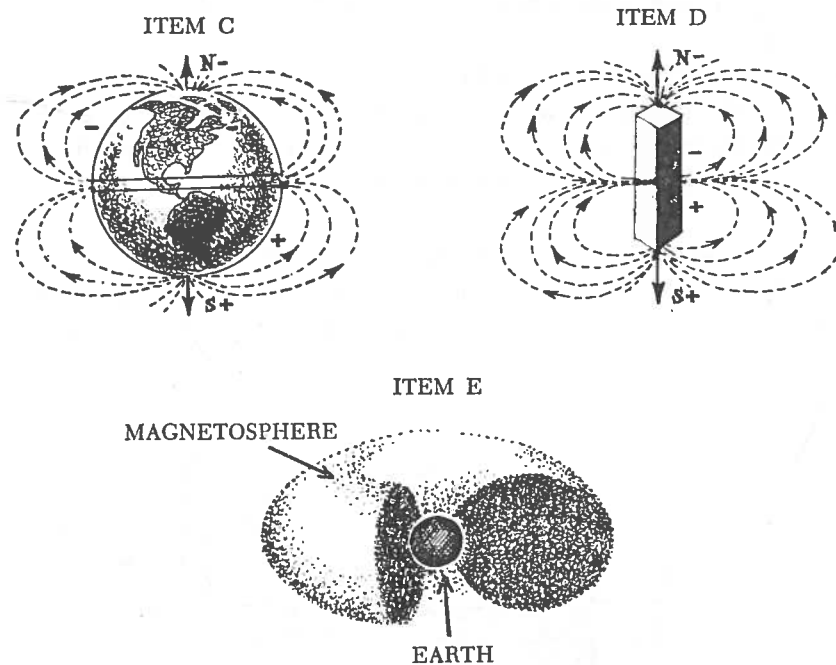
This mistaken concept is used today in most biological research dealing with the science of magnetomagnetic effects to biological systems. Diagram B shows the mistaken concept of the magnetic field of a magnet by the paper and iron filling test. This consists of taking a piece of paper, placing a magnet under the paper, sprinkling some powdered iron on top of the paper, and the

resulting arrangement is supposed to show how magnetic energy flows from pole to pole. Since each filing particle becomes a magnet, as explained earlier in this book, this method and deduction are in error.

We now present the updated theory of magnetism surrounding the earth and also a bar magnet. We refer to the measurements made of the earth's magnetic fields as recorded by the research conducted in space by the National Space Administration's research of magnetic measurements. This compares with our findings that the earth, like a bar magnet or any magnet, has a magnetic equator and it is at that point where the spins of electrons change their phase relationship and present us two fields of energies and two different potentials of magnetic energy. This offers a totally different picture than is now used in present textbooks and is used as law and theory in all related research. Our laboratory findings also show where the magnet's energies should be applied in and to biological systems to study the effects of magnetic forces on living systems. For the study of the new concepts as to phase spin change and relationships refer to Chapter Three.

The two drawings shown on page 57 are marked Item C and Item D. Drawing C presents what now has been measured and recorded by the space recordings and probes. We see how the magnetic energy leaves the earth's S pole, spinning to the right, then dips to the surface of the earth, and changes its spin by 180 degrees, then again leaves this mid-magnetic equator of the earth and travels with a left spin to reenter the earth at the N pole.

The drawing marked Item E is an outline projection of the Van Allen radiation magnetosphere. This envelope-shaped field contains radio active fields and many other atomic radiations. Do not confuse this field with the existing magnetic fields we discuss. Item D shows the same magnetic equator that is present and is shown in Item C. The bar magnet has this division of energies as does the earth. All magnets have this magnetic equator where the energies are divided and changed as to their magnetic spin effect, which then presents us with two values of magnetic energy—south, or positive, and north, or negative, energy. It is the popular belief that magnetism flows only in one direction. However, we have presented evidence to support that a magnet's



energy has two flow directions. A magnet's magnetism flows in two directions, not one. This follows the concepts of electricity that voltage and current flow in opposite directions. Here we again see an almost identical behavior of magnetism and electricity. In fact, we cannot have one without the other.

As we continue this book we will show how the two energies, voltage and current, that we have in a single pole energy, either the N pole or the S pole, can be made to perform with different yet almost computerized exactness in obtaining the results desired in treating biological systems.

By application of the N pole's magnetic energies we can arrest certain bacteria while strengthening the normal body cells surrounding the invading and attacking bacteria. Yet both are living systems. Where E is the voltage effect and I is the current effect we then have E and I in a single pole energy that applies equally to the N pole, negative, and the S pole, positive, energies.

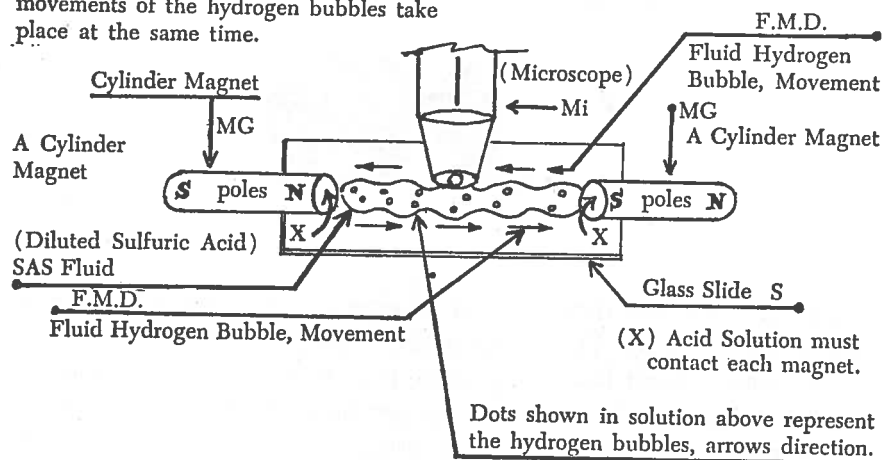
Refer to the detailed outlines and drawings used to support the fact that the flow of magnetic magneto energy from the poles of

any magnet has a dual nature, flow, and type of energy, again E and I.

It is of extreme importance that this simple interaction of a two-directional flow taking place be understood. It has two general effects to each biological application, each having great importance to our understanding of magnetic effects.

A LABORATORY DEMONSTRATION TO SHOW THE TWO DIRECTIONS OF FLOW OF POLARIZED HYDROGEN BUBBLES IN A MAGNETIC FIELD

Note: The two directions of movements of the hydrogen bubbles take place at the same time.



The general movement of a magnet's fields is expressed in most test materials as "the magnetic energy leaves the S pole and travels to the N pole of the magnet or the earth's magnetic fields, as an example." However, in the above research findings, we have taken a diluted solution of sulfuric acid and distilled water, making a solution having a specific gravity of 1175 degrees for use in a fluid liquid channel between the two poles of two magnets, placed as indicated in the foregoing drawing. Use a magnitude from 500 to 1000 X scope lens power. After a period of four to six minutes, the longer the better, the hydrogen gas bubble activity will start to flow. One to two bubbles can be seen flowing from

the S pole to the N pole of the two magnets. A few minutes later, a reverse bubble flow will be seen. These hydrogen bubbles flow from the N pole to the S pole of the two magnets. The two directions of bubble movement can be seen clearly. We use the electrical identification formula to best describe the dual directional flow of energies, I for current and E for voltage.

The flow direction and first movement of the hydrogen bubbles described above indicate the similar behavior of voltage in electrical systems. As voltage leads the first action to a flow of electricity, then current lagging behind the voltage starts to flow to support the amount of current that is demanded of that circuit's load. The lagging time of current to fill the demand of the resistance of the load applied is only a fraction of a second's time. However, in the experiment described there is an extension of time necessary to see this flow demand take place, the magneto magnetic current.

The direct and similar law of "The Ohms Law" seems again to be supported in the energy supplied by a magnet. This should also be considered possible in the earth's magneto magnetic flow between the two poles. It is our objective to present new and more acceptable theories of how we may better use the magneto magnetic energies of magnetism. As we point out what appear to be major errors in modern textbooks, we hope these outlines and our discoveries that are a direct result of our laboratory research will result in new laws and concepts and theories that will lead to even further discoveries in and of magneto magnetic energies, a magnet's energies and other electromagnetic forms of energies.

To aid in the understanding of the discovery that a magnet's magnetic field is similar, if not exactly like, to the electrical voltage and current flow laws, we present in part the fundamental Ohms Law to show the principles of magneto magnetic vs. electrical laws:

simple mathematical relationship between the e. m. f. applied to a conducting circuit having a certain resistance, and the current which would flow in the circuit. This relationship is now known as *Ohm's Law*. The law is stated thus: *The intensity of current in any circuit is equal to the electromotive force divided by the resistance of the circuit.*

Expressed in the common electrical abbreviation this law becomes:

$$I = \frac{E}{R} \quad (1)$$

where I = current in amperes.

E = e. m. f. in volts.

R = resistance in ohms

Equation (1) enables us to calculate the current (I) which will flow when an e. m. f. (E) is applied to a circuit having a resistance (R).

Example: What current will flow through the filament of a vacuum tube having a resistance of 20 ohms, when an e. m. f. of 5 volts is applied?

Solution: The current in a circuit may be calculated by Ohm's

Law using the equation $I = \frac{E}{R}$. By substituting 5 for E

and 20 for R we obtain $I = \frac{5}{20} = 0.25$ Amp. Ans.

To find how much pressure or e. m. f. must be applied to a circuit to make a given current flow through a conductor having a known resistance, equation (1) can be put in more convenient form by simple mathematical transformation.

$$\text{Thus since } I = \frac{E}{R}, \text{ then } E = I \times R \quad (2)$$

Example: The resistance of the filament of a vacuum tube is 20 ohms, and it requires 0.25 amperes for proper operation. What e. m. f. should be applied to obtain current?

Solution: $E = I \times R$. Since $I = 0.25$ amp, and $R = 20$ ohms, the $E = 0.25 \times 20 = 5$ volts. Ans.

When the e. m. f. (E) and the current (I) are known, the resistance R of the circuit may be calculated very easily by placing equation (1) in more convenient form

$$\text{Thus since } I = \frac{E}{R}, \text{ then } R = \frac{E}{I} \quad (3)$$

Example: An e. m. f. of 5 volts applied to the filament of a vacuum tube sends a current of 0.25 amperes through it. Calculate the resistance of the filament.

Solution: $R = \frac{E}{I} = \frac{5}{0.25} = 20$ ohms. Ans.

(4) From Ohm's Law (equation (1)) we have $I = \frac{E}{R}$

Substituting this value of I , for I in the power equation (4), we obtain:

$$W = E \times I = E \times \frac{E}{R} = \frac{E^2}{R} \quad (5)$$

This gives an expression for the electrical power in terms of the voltage and resistance.

From equation (2) we have $E = I \times R$.

Substituting this value of E , for E in the power equation (4), we obtain:

$$W = E \times I = I \times R \times I = I^2 R \quad (6)$$

In comparing a simple one-cell battery and its electrical energy and polarities to a magnet, the first difference is that if we short-circuit a battery all the energy is consumed. If we short-circuit a magnet by placing a keeper bar or iron or steel across its poles we only arrest its loss or use of energy. If we do not place a keeper bar across the poles of a magnet it will lose its strength. We are now discussing only a common magnet and not the more advanced rare earth magnets. A magnet's energy consists of polarized atoms of the molecules of the material of which it is made all spinning in the same direction, forming atomic energy in part. However, we must keep in mind that the center of each and every magnet contains a magnetic equator and it is at this point that the atomic electron spin changes its phase relationship and spin to the opposite direction forming the two potentials—one positive (S pole) and the other negative (N pole).

A magnet can lose this polarization energy (magnetism) by allowing the energy to flow into space, losing its energy by atmospheric space absorption, such as the straight line emission of energy that leaves the ends of the poles.

When we apply a magnet to perform a specific function its energies may be drained, such as pulling reeds (metal plates) in the activation of a relay or to lift metals. Each time a magnet's energy is applied a portion of the energy is lost in the metal to which it is applied. Physical contact results in certain transfer of the polarized energy to and into the metal the magnet is applied to. Here we are discussing standard permanent magnets. Their use is in motors and other more sophisticated devices which also act to consume the magnet's energies.

On page 58 we show a test that can be reproduced to show the dual and opposite directional flow of energy that takes place in a magnetic magnet circuit.

To show how to short out a magnet, remove its energies, without A.C. currents being applied to the magnet, the conventional method to remove magnetism from a magnetized metal is to lower the magnet into a glass beaker of sulfuric acid. The magnetic fields will be absorbed in part in the acid. The acid would then act to short out the magnetic energy by speeding up the loss of the magnetic energy by acidic absorption. This test is worthy of reproducing as it shows a curve of gauss loss to the magnet's normal gauss strength prior to placing the magnet in the acid bath. The time curve is hours to days to lower this energy that would normally take years to do under normal magnetic operational uses.

Indications from these tests in our laboratory are that the magnetic energies are transmitted from the ends of the magnet in straight or linear lines, as magnets have a frequency and/or wave formation similar to that of a wave length. Our research has also shown that magnetic energy can be mode-modulated by application of other frequencies. This provides an intermediate frequency result, an I. F. frequency. Again, we see a new approach to the use of magnetic energies including those from a magnet that were previously unknown. This discovery should lead to new discoveries and developments to serve electronics, biochemistry, biophysics, physics, and all fields of applied sciences.

On page 64 we show a chart indicating the many frequencies of energy as the overall frequency spectrum. The frequency spectrum chart is presented for better understanding of the laws of physics for our further discussion. Each form of energy is

motion. This motion is in cycles per second of generated energies, energies that combine as to the frequency, the number of cycles of energy that is present, to make possible the division between energies and their types and forms.

In discussing any new scientific concept we have found, in writing or lecturing on the subject, it is better to start at the very basics of that science, which provides a firm foothold for a better understanding of the subject, the improvements to the concept, theory or practical mechanics of the discovery or development in the presentation.

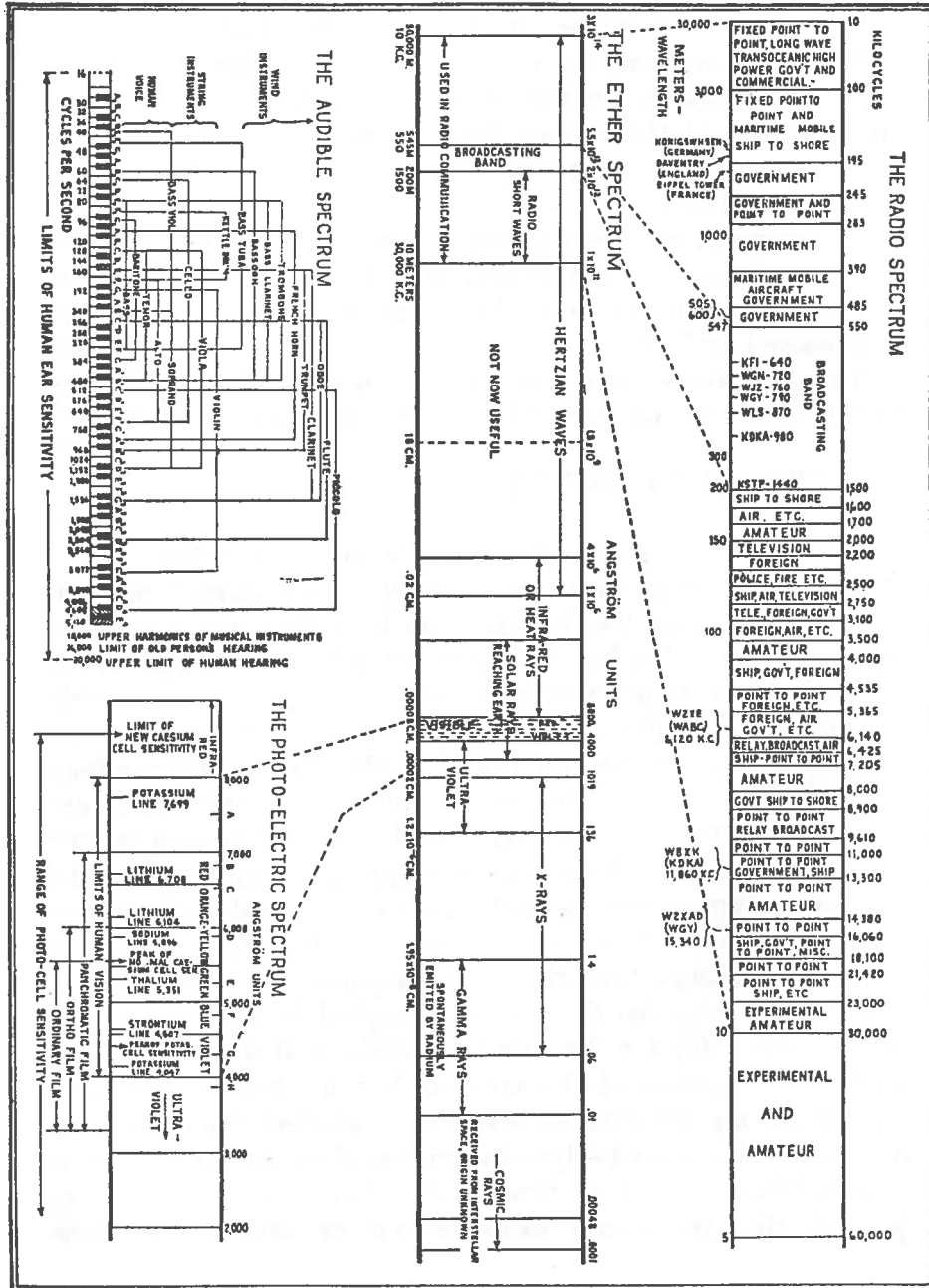
At this point we present another misconception of magnetism. It is today presented in textbooks and the general understanding of a magnet's magnetism that the energy transmitted by a magnet is composed of "Lines of Force."

Our laboratory findings show that energy radiated from the magnet is in fact not lines of force but small cables of force.

THE CABLE EFFECT

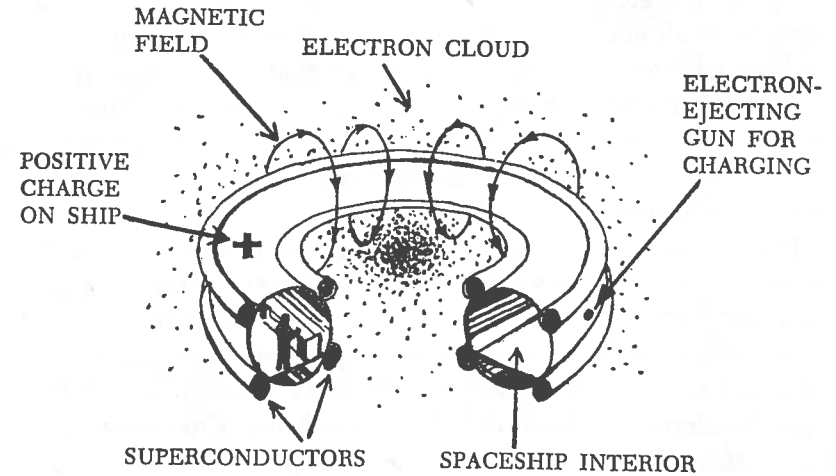
Due to the importance of properly knowing and understanding the makeup of magnetic energy coming from a magnet, we continue here to present the findings of our laboratory over many years of development. Another finding is actually seeing in part that energy that is transmitted from the poles of a magnet. It is possible to obtain photographic pictorial outlines that allow us to see the magnet's energies as they in turn affect the scanned 400 apx lines of electron sweep appearing on the internal face of a color dot cathode ray tube. Bringing one end of a magnet to and against the exterior glass surface acts to cause the energies from the magnet to displace the horizontal scan and vertical scan lines on the tube's surface. This activates the color dots in an outline of the applied energy from the magnet's poles. This resultant displacement display can then be photographed in color by the use of color film with a F 1.8 lens on a good, well-mounted camera with a time exposure of 11 seconds or less in a totally dark room. The results are not lines of force being emitted from the poles of a magnet but are miniature-size cables. These cables are several thousandths of an inch in diameter at the very end of the magnet pole. As they travel to 1/16 of an inch to many inches, these

Outline Representing in Part the Frequencies, Number of Cycles per Second Found in the Audio and Electromagnetic Spectrum



miniature cables enlarge and allow a view into the interior of these cables. The spin effect is also noticeable by a pull, an electronic vortex twist, that appears on the screen at the outside edge of each cable and/or the roster. The horizontal scanning lines that appear on the color dot cathode ray screen are pulled in the direction of the magnet's energy electron spin. The N pole acts to present a left-hand spin in relation to the pole position and that of its directed position to the screen's surface. The S pole then acts on applications to the surface of the tube to present a right-hand spin. The cables also take on and present this electron spin effect. The center of each cable contains an energy that is opposite to the outside electron potential form. There is much more to this cable effect and we hope at a later date to make available a book on the discovery of the twin energies of the cable effect on magnetic magnet energy.

Many theories and concepts persist in new methods to protect men in space from harmful radiations of magnetic fields. One particular concept is illustrated in the accompanying drawing.



"Plasma shielding," an alternate plan, puts positive electric charge on craft to repel protons—and uses superconductive magnet's field to prevent approach of electrons that would destroy charge.

In the presentation the use of superconductive tape wound magnets is suggested. The tape is wound to make electromagnets having no resistance to the flow of electricity by supercooling. The belief was expressed that a very high magnetic charge would shield persons inside the container against space radiations.

Although this concept was and is still novel and instructive, it would not protect persons in the space container from the effects of the magnetic fields due to the construction.

Our laboratory findings are definite on the biological effects magnetic fields have on living systems. The high magnetic field environment created in the suggested design have dangerous side effects on the humans in the container.

From our research findings we offer the suggestion that man in space can be better protected from space radiation in an environment suitable to earth's environment, and man would not face a magnetic field lower in space than on earth. It is known from space technology that leaving the earth's magnetic environment to a lower magnetic environment can result in serious discomfort or death from combined exposure to the lower magnetic energy.

Our solution, based on our research findings, is to design suitable magnetically treated clothing or a wall-to-wall internal magnetic environment of the ship's inner surface that will provide the space travelers with protection against lower than normal magnetic environments. Also, the outer skin of the ship may be provided with an electromagnetic charge that would assist in offering protection against many types of space radiation. This can be done so there would be no effect to radio communications or equipment operations. The electromagnetic charge can be applied within the ship or located outside the ship.

The effects of lower than earth's magnetic field to living systems are well known to NASA's space medical directors; they are deadly and most harmful. As we write this we believe that from the developments we have made there may come a partial answer to many of the problems facing future space research undertakings. These developments show the direct possibility also that magnetically treated clothing can be used to upgrade strength. Special treatment of the clothing can also aid in the recovery from atomic fallout exposure accidents that result from handling, using, or accidental exposure to atomic energy and/or X-ray radiations.

Our discoveries show that when certain magnet magnetic energies are used in adaptable clothing, arrest and recovery are practicable in a great number of cases from the harmful radiations as described.

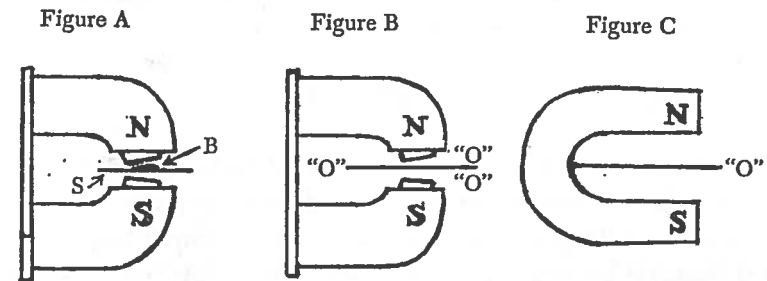
Chapter Eight

WHY PREVIOUS EXPERIMENTS HAVE FAILED TO BE REPRODUCIBLE

Since the late 1800s research has been carried on in many countries of the world on the effects of a magnet's energies. While a great deal of important research data and resultant papers that were written are still presented on the biological effects of magnetic fields, much of the early work as well as the recent work is not reproducible to obtain definite results.

In this chapter we will present some facts as to why these experiments, many of them of great importance had they been reproducible, could not be reproduced time after time with the same results.

Figure A shows a laboratory horn-type magnet; its poles are indicated by N for north and S for south. A microscope slide is shown between the two poles. Note that the subject matter B on the slide is nearer the N pole than the S pole. By physical placement nearer the N pole a greater distance exists between the subject matter and the S pole of this magnet.



N is North Pole. S is South Pole. Slide marked S, and Specimen B.

The culture or biological specimen then would not be properly aligned to receive both pole effects. It would, in fact, be receiving

more of the negative pole energy than the south pole, which is positive energy, and part of the specimen would be in the center of the Bloch Wall effect separation. This separation is where the S pole energies as they travel toward the N pole would be in the center of the 180 degree phase relation change that takes place between the poles of each and every magnet.

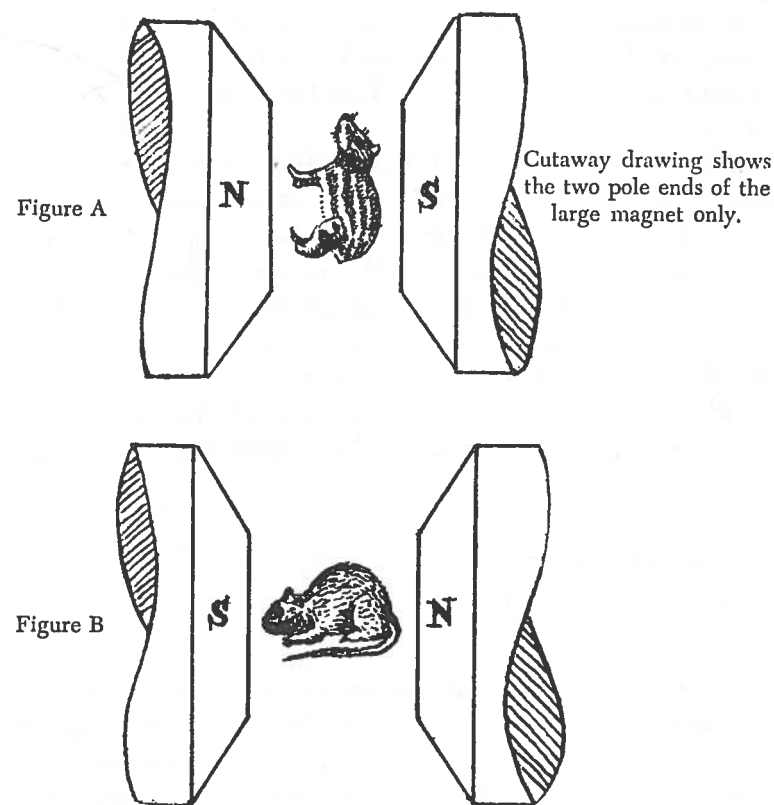
Therefore, when this experiment was duplicated there could be a change in the physical positioning of the slide and its specimen to the pole effects. The results then could never be exactly reproduced, and should it be that it was possible to get this direct exactness in positioning, the effects would be in three parts, not one. To explain this refer to figure B. We see the exact center of this horn-type magnet's poles indicated by a straight line. This is the center of the 180 degree phase change. This line indicated by the letter O further indicates that we have no magnetic lines of force that carry either the negative or positive pole effect at this position. Instead, we have a division or zero point of energy radiation. The same exact occurrence would take place if we used a horseshoe magnet—see figure C. The line of separation is again marked with the letter O.

Should we place a test tube of fluid upright between the two poles of a magnet, we would, if its positioning was exact, obtain the dual effect energies and the zero magnetic potential effect as indicated by the phase change point O. We can see we have in fact a three-stage potential radiated effect to the specimen, whatever the nature of the specimen might be.

SMALL ANIMAL RESEARCH

We show here a small animal placed between the poles of a large magnet. Many researchers use electromagnets—magnets having exact windings and connected to D.C. power sources. There is a difference between the effects one can obtain from a solid state metal or composition magnet and those of an electromagnet. We discussed this earlier as to magnetic wave frequencies. In the poles shown, N is north pole and S is south pole.

The popular positioning of small animals or rodents between the poles of magnets is to place the animal in a confining cage made of aluminum wire mesh, positioning the animal lengthwise



between the poles. In this manner half of the animal's body receives the S pole energies and the other half the N pole energies.

We show in these drawings an animal lying sideways. This was done to show that each end of the animal is receiving only that particular pole's energies, and the middle of the animal is receiving the O Bloch wall magnetic field separation of the zero magnetic field, the energy result of the center of the 180 degree phase change of the magnetic spin effect.

In scientific books written by authorities today and those by researchers who conducted similar research many years ago, we find the ironclad theory that both poles present a "homogeneous

field." While they refuse to change their thinking toward the facts we have attempted time and again to present to some of these scientists, their work will continue to be based only on misguided and mistaken applications of magnetic fields in their research of biological and biochemical systems. The two pole fields are not homogeneous or the same.

Each pole has a separate and totally different effect to any and all specimens to which it is applied. This encompasses all living matter—airs, gases, solids, chemical reactions. This should open new doors to advanced physics using this newly discovered law as a foundation. While we say new, your senior author discovered this law in 1936; however, scientists and researchers have refused to accept this law in the past. Now is the time to update their research and allow a better approach to advance this vital science since it is a science important to all the known sciences of man today.

MUTANTS ARE DEVELOPED BY THE OLD CONCEPT APPLICATIONS

Let us now take the case of the growth and development of mutants. One species that has been widely used in biomagnetic research is the *Drosophila melanogaster*, commonly known as the housefly. The continued use of equipment to hold the young fly or the larva or the eggs prior to hatching has resulted in and after exposure to the magnetic fields of a magnet in producing, as growth and development proceed, mutants. These experiments have produced specimens having one large eye, one withered wing, two long legs, one short leg and one long leg, and so on. This is magnetic mutation of the living system by controlled radiation of the fly and can apply to insects, animals, or living systems by selected magnetic fields.

The side of the insect placed next to the S pole will grow at a faster rate since the S pole energies are the production of the positive right-hand electron spin which causes an advanced growth and development of any and all biological systems exposed to it in the early stages of development before maturity has been attained or by treating the larva before birth.

The reverse takes place when half of the animal, insect or

other living system is exposed to the N pole for suitable periods. The strength of the magnet used depends again on the technical researcher as to the subject of his research. We have found that from 1,000 to 4,500 gauss is the best curve or range from low to high gauss that effects the best overall results of alternation to the living system.

It is possible to program the changes of the genetic attitudes of animals, plants, insects. We can change the normal genetic growth and development to abnormal products of living systems so planned and computed by advance knowledge and planning.

Total exposure would then result in the living system being placed in either the S pole for advancement of the genetic programming or the N pole for arrest or development of the genetic size and health of the system.

We emphasize to the student or professional researcher that even greater changes can be found by even further and equal discoveries of the effects from a magnet's energies using other forms of concept discoveries. This is a vast field in itself and should properly be presented in later releases.

The genetic changes we have programmed in our laboratory experiments and findings were important in other research work on cancers and cancer tumors of many types and stages of development.

THE POSSIBILITY OF DIAGNOSING HUMAN ILLNESSES WITH CONTROLLED MAGNETIC FIELDS

From the work and research we have conducted with animals having a blood type and circulation system similar to man, we foresee in the near future the release of a system for the detection of nearly all human illnesses by application of the fields generated and transmitted from a magnet—solid state or electromagnet.

The disclosure is based on the fact that it is now possible to screen many complaints in animals by the physical reactions presented by the animal's nervous system when select and controlled magnetic energies are applied to affected parts of that system. This discovery was made while working with the nonhomogeneous magnetic fields on animals and measuring their physical responses under the separate and applied fields.

Chapter Nine

CANCERS AND TUMORS AND MAGNETISM

In order for this book to be read and understood by the layman, student and professional researcher, we are refraining from the use of highly technical material or language and the display of mathematical computations. These materials are, however, available for proper usage.

Over 300 active cancer biopsy transplants to laboratory strain white rats, mice and rabbits, each having a similar blood type to that of man, 89.6 percent, were programmed as to growth, development and/or arrest of the cancer. This was accomplished through the proper application of the arresting energy of a magnet's poles. This was the N pole or negative electron spin effect of that pole's energies. Years of research found that one effect of cancer development is a genetic transfer from one generation to another, not necessarily in that order. A genetic carryover from one generation may not be found to become active until the third or fourth generation. Yet, positive information as a result of some 18 years of these studies is convincing in our findings in this area of study. During the 18-year period, two years were completely devoted to these studies. Cell genetics can carry the active cancer seed for future generations and development once the cancer seed is active in a living system. This does not apply to all cancers. There are types that are local and can be arrested and do not carry over as genetic transfer.

We will not entail a detailed discussion on what causes cancers since there are as many causes of cancers as there are types and kinds.

In our earlier discussions on the electromagnetic effects to mankind we discussed the outer space electromagnetic effects on man and his biosphere (biological atmosphere). Several causes for cancer were presented in that discussion.

At this time in our history there are over 100 types and kinds of cancers. What may arrest one type will not necessarily have an affect in arresting other types. Clearly we can see from such facts that no one agent will arrest all cancers. There has been no agent, process, drug, or development to combat all cancers effectively as there is no known single cause for the development of cancers.

Accepting these scientific facts as we know them to be, should we find a single form of combating agent that would arrest all cancers this would be a remarkable and outstanding discovery.

There are various forms of treatment that will arrest cancer development of many kinds and types if they are caught in their early stages of development.

We are interested in the early stages of development and equally in the advanced stages. In each phase we find that when magnetic energy of the negative N pole is applied to the cancer site, a remarkable reduction in the condition and also a marked arrest in further development of the cancer condition takes place.

Our laboratory has not at this time been able to secure biopsies of active cancers of all of the more than one hundred types known to exist. We have, however, obtained through medical doctors and professional people engaged in cancer research many different samples of active cancer tissues for transplant and development. It is well known that you cannot transplant any form of cancer and have it take unless there is a state of infection at the transplant site. Cancers will not take when transplanted to healthy tissue. In our laboratory we have infected that area planned for active transplant of cancer tissue cells prior to making the transplant. The infection has failed to take in some cases and had to be repeated, but it will infect eventually unless there are adverse conditions to this taking or acceptance action on the part of the research animal. Prior magnetic exposure has prevented an active take of infection even after several attempts have been made to graft an active cancer transplant. A form of antiserum, or defense mechanism, seems to have developed in a number of cases to prevent the cancers from taking and developing after such exposures.

Prior to the active cancer cell tissue transplants the animals were radiated, exposed, to the negative energy of the N pole energies for several hours. This acted to resist our attempts for a successful cancer graft to result or take. Take is used here to mean the

infected tissue accepts the active cancer transplant and develops into a state of multiplying cancer cells.

The encouraging fact is that when tissue is exposed to negative magnetic energies prior to the transplant of the cancer-infected tissue, there is a noticeable resistance to its successful development even to previous infected and prepared sites.

Here we see "What is now needed is a new approach as to the unification of energy." This statement is not original. In fact, a number of outstanding researchers have made this statement within the past few years. It is becoming more apparent that unification of the findings in the many fields of applied cancer research is needed to obtain a fresh, new, theory or concept for use of all the sciences that have shown good results in arresting the development of cancers.

Should we start at the very beginning of the structure and basic energy of all biological living systems which makes it possible for them to live and multiply, we would find the atom and its electrical system, which is a great teacher for new approaches and better understanding of what we are working with and our purposes.

In making in-depth examinations of the applications of electrical and radiological energies which have proven to be partially successful in arresting all stages of cancers, we should study the laws of the atom—the electrical building block of all matter, including all biological life forms. From this study of the atom we can see it is possible to arrest any form in the living system, including bacteria, malfunctions, and mutations of cells, tissues, organs and glands. Each of the aforementioned segments are the result of molecules being built from single groupings of atoms.

When this primary and most elementary law of physics is applied to living cells, we see a well-balanced electrical system, and any changes will upset the well-regulated bioelectrical system of the cell, causing it to deform, mutate, or break down. Since it is now possible to measure and record the voltage existing on the outer surface of the blood cell's membrane, the first recordable signals tell us there are difficulties arising in the structure of the membrane supporting walls of the cells; as in the case of the red blood cell we find a rise in the negative voltage. The rise in negative ion charges on the outside of the membrane wall is then compared with what happens to the atom. When there is a rise in

the negative electrons on the outer vortex of the atom, the atom is no longer the simple type of atom that makes up a substance; it is then altered to make the molecules form a more complex structure of the element or substance. We might then compare the simple hydrogen atom and the second type of the same hydrogen complex that is slightly more complex, yet, nevertheless, remains a hydrogen atomic complex.

The blood cells' bioelectrical ion charges, which result from the charges taken on in the form of sodium and potassium ions, their charges, and level of charges, depend on the selectivity of the walls of the membrane.

Anything that changes the selectivity or the charges of the cells and their membrane supporting structure will affect the health and welfare of the cell proper. Other direct research findings that link the membrane variations and the transformation of normal cells into malignant cells present a linear curve as to the voltage measured across the normal cell, and the rise above normal negative voltage found to exist on the cross axis measurement of the malignant cells. In further investigations, we find in all cases of human or animal biological stages of internal repair we have a rise in the negative potential on the outer surface of the affected section. This also follows a resultant linear curve as to the amount of negative voltage potential as to the degree of damage compared to the rate of natural healing of the affected part to the living system.

However, here we depart from the normal. The cells that develop into malignant cells at first show a rise in negative potential voltage across the cell's structure, a slow change takes place, and we find when the cells are fully developed as malignant cancer cells the negative voltage across the cells drops to a lower than normal negative voltage potential.

The first effect is the rise in negative voltage which we find happens in all damaged segments of the living system. The resultant drop in below normal negative voltage across the affected segment tells us that repairs have not been made and that part, segment or cell is a mutant no longer under the repair control of the living systems' defense mechanism. This is noted by the negative voltage being lower than normal. We note here that normal means the normal potential found to exist on the same segments,

and cells that are present when there is no difficulty experienced in or by that segment or cell's normal operating potential.

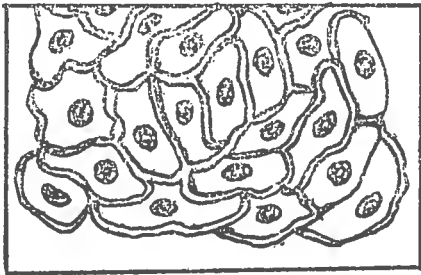
In further study of this effect we find nondividing cells have a high normal potential negative voltage opposed to a very low or lower than normal voltage existing on the cross section of dividing cells. Dividing cells means cells that are affected and are malignant, including rapidly proliferating tumor cells.

As a direct result of these galvanic potential related energies, we find whenever we have damage to any part, segment or cell of the living system we have a higher than normal rise in the negative voltage potential. When normal healing and recovery results the negative returns to normal. If we then find a lower than normal negative to continue we have a section that has failed to recover and return to a normal state of health.

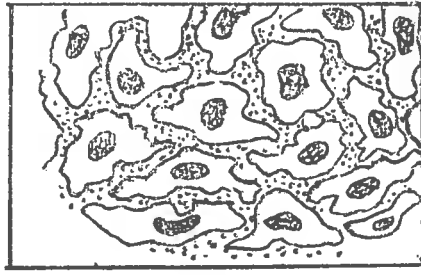
On page 78, Item A shows a normal red blood cell. Item B represents a form of malignant cell—note the deformed membrane outlines in Item B. Item C is an electron microscope photograph reproduction of a healthy red blood cell. Item D is a red blood cell that has decomposed, showing the breakdown and resultant misshaped cell when affected by the presence of a distorted potential of biological voltages. Migration by active electrolytic transfer from one cell to the next results in any number of associated blood decomposure forms of diseases. In every case of advanced malignancy there is found to exist a lower than normal voltage across the cell's membrane and an increase in the plasma and/or fluid amounts and flow between each and every cell. To present this rise in fluid flow and the distortion of the cells membranes, we show on page 79 several low microscopic magnification photographs ranging from 60 to 100 X power of blood cell patterns. These are a result of drawing a few drops of whole blood from a fingertip, placing on a microscope slide, and allowing to dry, and then examining them under the low power magnification. Using this most elementary method of screening the blood, a number of very interesting facts are brought to light.

No. 1 on page 79 shows a microscopic enlargement taken by a 1800 power microscope of a few normal blood cells. We use this as an example.

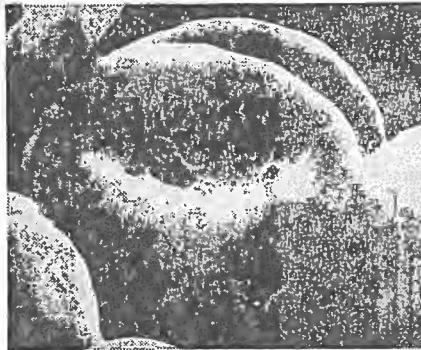
No. 2 shows the increase of plasma, fluid, that can clearly be



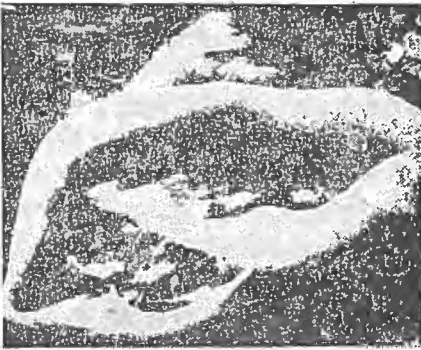
ITEM A



ITEM B



ITEM C



ITEM D

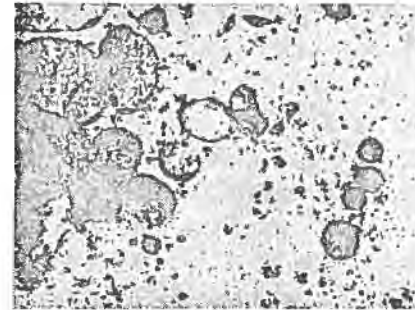
seen between the dried blood cell clustering. This sample was taken from a male, 44 years of age, suffering from cancer of the supermaxillary with metastasis. Study here shows profound disturbance of the clot retraction pattern.

No. 3 shows a blood sample of normal blood after drying and using the low power 60 to 100 power microscope lens for this screening study.

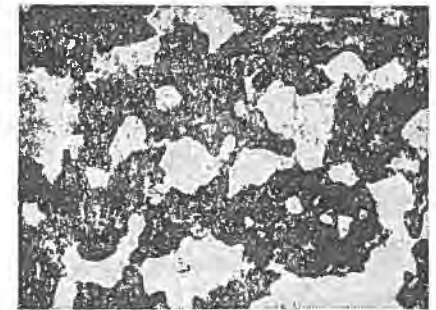
No. 4 shows a dried blood sample of a male, 70 years of age, suffering from advanced leukemia. Note the almost identical pattern-to that of one of the many and foremost types of cancer.

No. 5 shows a pattern of dried blood of a 12-year-old female, symptomless. Note normal blood clotting pattern.

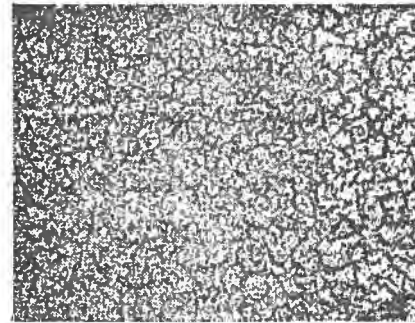
No. 6 shows a dried blood sample of a female, 34 years of age, four months pregnant with no cancer development. Note the similar pattern of the disturbances of the blood and the increase of plasma, fluids, separating the blood cells and blood cell clusters.



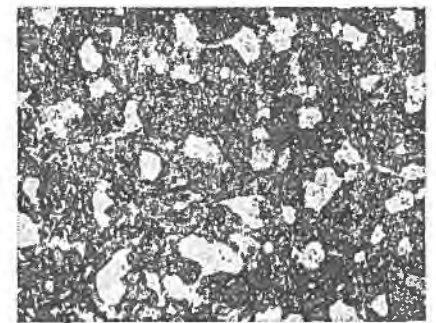
No. 1



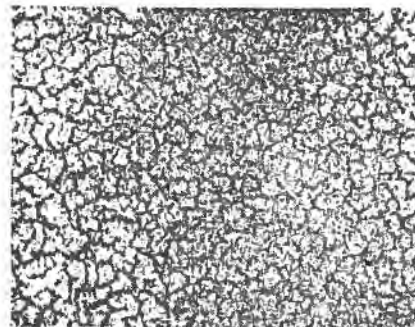
No. 2. Male; 44 years; cancer of the supermaxillary with metastasis; profound disturbance of the clot retraction pattern.



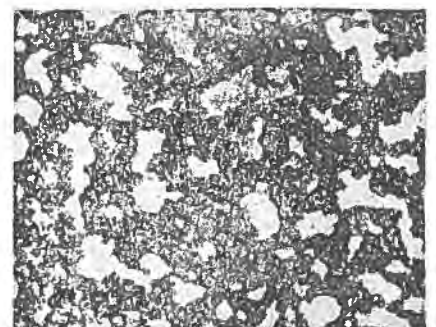
No. 3. Male; 55 years; symptomless; normal clot retraction pattern.



No. 4. Male; 70 years; leukemia; disturbance of the clot retraction pattern almost identical with cancer.



No. 5. Female; 12 years; symptomless; normal clot retraction pattern.



No. 6. Female; 34 years; but four months pregnant; advanced disturbance of the clot retraction pattern.

These microphotographs show us in this simple form of screening the changes in the amount of fluids, plasmas, that flow between blood cells clusters when there is an abnormal condition existing in the system. Abnormal meaning not as we would find blood serum flowing under normal conditions. These photographs also show how pregnancy alters the amount of fluid serum flow between the cells and that which happens when cancer is present.

Photograph No. 6 presents the clue that when the body is under stress as in the condition of pregnancy there is a weakening of the normals as the embryo in forming is calling on the human system for blood and all the basics needed to support this additional life developing in the body and the system devoted to new human development. This is an overall demand which acts to upset the serum balances of the cells while not the cells themselves.

The cells in the case of changes in the blood serums and/or fluids are not affected as they are in stages of cancer developments. In cancer developments we have a destructive mutation of the cells' membranes.

In the case of cancer, the increase in the separation of blood cells and the clustering separated by the serum amounts, as an increase in the amount of blood fluids, plasma, this fluid then acts to be a carrier for the escaping electrolyte that flows from the malignant cell and it now appears to act to upset the electrolyte fluids of other cells. We then see the possibility that this effected electrolyte can and may be the carrier or active transport for fluids escaping from the decomposed cell walls of effected cancer cells.

There are two major theories which are foremost today in research into the causes and arrest of cancer. One theory is that a virus may be responsible for the start of the condition. The second theory is that food intake, chemicals in foods, or for a number of reasons, a condition develops causing a disturbance in the blood cells' balance as to the biological chemistry of the cells, therefore, the tissues.

Today researchers know more about cancer development than at any other time in history. However, the mystery of why cancer develops in the human or living system remains. We have discovered in part that tumor cells develop and multiply rapidly without any apparent control responses. Further, they have the ability

to spread rapidly throughout the living system. It has also been discovered that natural sunlight can cause cancer of the skin, as can other energy radiations. Chemicals and gases, such as cigarette smoke, can trigger cancer of the lungs. Certain viruses when transplanted into laboratory animals can also cause cancers. On eating the flesh of livestock that have been fed certain feeds containing a number of chemical growth stimulants, cancer again has been promoted. There are a number of viruses that when injected into rats, mice or rabbits develop into cancers and are transmitted by injecting the blood from one to another. If we study these transferable reactions that act to trigger the cancer cell development, we see there is a good chance cancer is caused by a delayed to prompt response of the virus.

THE EFFECTS OF MAGNETIC FIELDS ON CANCERS

Of the several hundred research transplants of cancer to rats, rabbits, mice, and other animals, it has been proven that the N pole, the magnetic negative energy of the two poles and their separate energies, has slowed, controlled and arrested further development of the active cancer site. Better than 90 percent of the cases so treated have shown a control and arrest of the cancerous condition, depending on the state of advancement of the cancer and the age and physical condition of the animal in question.

To further support this finding, when the S pole of a magnet, this being the positive energy of a magnet, is applied to cancers they become more advanced and then develop, grow and spread at an accelerated rate. Therefore, the two effects prove that the energies generated by a magnet's two poles can and will prove in the future to be a new application of a very old science toward the arrest and/or containment of cancer development.

As pointed out earlier, when any disorder, break, certain infections, or physically damaged parts of the living system are placed in a strong negative energy field there is almost at once an arrest of further damaging developments. We also discussed earlier that nature itself directs a negative electrical field to a broken bone or other damaged segment of the living system under attack. We feel this shows in part the effects of controlled negative energy

effects of the north magnetic pole to aid in the arrest and more rapid healing of many, if not all, forms of disorders to the living system.

THE CONTROL OR ARREST OF CANCERS BY MAGNETO THERAPY

Leaving the effects of magnetic fields on cancers and tumors, let us review the findings of the work in our laboratory to date and the results we have obtained by the use of this energy on actual cancer transplants, which have shown that we have a new and vital tool to combat, control or arrest many, if not all, types of cancerous conditions.

If the cancer is deep beneath the skin's surface, care must be taken to insure that the cancer site will receive negative (N pole) magneto magnetic energies having gauss strength from 2,500 to 4,500 and that this amount of energy is not merely applied to the outer flesh. To assure proper dosage to the cancer site, calculations must be made by measuring in inches the distance from the N pole of the magnet to the depth the researcher wishes the treatment exposure to reach, then selecting the proper magnet or electromagnetic power having those certain gauss energies at that distance from the pole end. This can be done by taking a magnetometer reading at X number of inches from the N pole of the magnet selected. Naturally, should the cancer be within the body, this means we would have a higher than 2,500 to 4,500 gauss strength on the body's surface.

THE INCREASE IN THE PRODUCTION OF ERYTHROCYTES

Using the results of over 300 cancer research test cases of animals having a blood type similar to man, the findings of this work show:

An increase in the production of erythrocytes in peripheral blood while proliferation of leukocytes is inhibited as a result of exposure of the cancer site to the negative N pole energy. These findings are documented by transplants of cancer, A through C classifications, to large and small rodents and to other animals.

These transplants having developed into first to third degree types, exposure thereof to the negative N pole energies resulted in an average of 88 percent arrest of further development and 87.5 percent recovery. The number of cases tested was 290 to 325. Success of this project was, in part, due to careful handling and exact and proper exposure over several months. Again, the fact remains that any exposure of the cancer to the positive S pole energies immediately caused an advancement of the condition. The S pole energies are positive and are similar in part to the effects of certain radiological energies being used today in an attempt to arrest cancers. Additionally, we have discovered that the negative energies of the N pole of the magnet also strengthens the unaffected surrounding cells, generating what appears to be an increase of the natural defense mechanism of those unaffected cells to combat spreading of the cancer.

In reviewing our research work with electromagnetic energies, we find we are working with an energy closely related to the one provided by the living system to the cells and tissues of the body which acts as a natural barrier to any form of cell or tissue breakdown. The results of our research work have shown that application of this natural energy may open doors for additional research and development not only for the control of cancer conditions but for a new approach to control, arrest and prevention of many of the diseases medical science now finds difficult to cope with.

In studying the two immunological defenders produced by the living system, these being B lymphocytes, which are manufactured by the bone marrow, and T lymphocytes, which are produced by the thymus located at the base of the throat, these two important fluids, which are antibodies, present the body with a natural defense mechanism to arrest, attack and control the numerous invading viruses, bacteria, infections, etc., that the body must defend itself against.

Although many drugs have been developed today, nearly all of these drugs result in poisoning of the cancer site or total or partial poisoning of the living system. Many researchers believe these drugs are the answer to arrest of further spreading of the cancers. However, poisoning of the system with alkaloid pharmaceuticals is only partially effective and is extremely harmful to the body. Yet, if the body can accept this toxic matter, some im-

provements will be shown but at the expense of the overall health of the patient. Therefore, we are convinced that attention should be directed toward the use of negative N pole energies and its applications for the arrest of cancer in either its primary or advanced stages, thereby giving the patient an advanced method of relief or the actual arrest of the cancerous condition.

From our years of laboratory research into the causes and arrest or relief of cancers by the use of magneto magnetic negative energies, we fully believe cancers are a direct result of an internal virus existing in the body or are actively transmitted to the body by external biological and/or chemical atmospheres, or a combination of these factors. Although not apparent during the life span of most men and women, we feel a cancer virus exists in all living systems and under ideal conditions may be triggered into a cancerous state. Evidence supporting this theory has been reported by other researchers. With the research now being conducted throughout the world, we believe an announcement of an anticancer vaccine could be imminent.

However, until an anticancer serum which will provide resistance to this disease is discovered and developed, the development and application of negative magneto magnetic energies could save millions of lives annually, worldwide.

The use of X rays, cobalt and radioactive energies are all of value. Again, we find that in each case of their use there is resultant poisoning of the living system. Within the composite electromagnetic formula of vibrations of atomic energy that these energy forms have and transmit to the living system, there are positive ions' reflective energies which in nearly all, if not all, cases act to advance the body's acceptance of these positive energies, which promotes many phases of the cancer condition. The entire projection of desired results is in the fact that these forms of energies will sometimes arrest certain types of cancers. If we were to agree with this accepted method of cancer control, we would need to see a considerably higher percentage of arrest than is now indicated. Here, as in the pharmaceutical drug usage, we find the cells adjoining those infected with cancer are adversely affected, lowering their defense against the continued outer wall membrane breakdown that is a result of cancer and is also a result of radiological exposure treatments.

Our investigations show that by the use of negative magneto magnetic energies we arrest the breakdown of adjoining cells and also arrest further progression of the cancer condition. We also strengthen the adjoining cells to act as a natural defense against further cancer development.

Further, we have found nerve pains and physical pressure resulting in nerve pain can be greatly arrested by the application outlined above used to arrest and control many forms of cancer development.

Chapter Ten

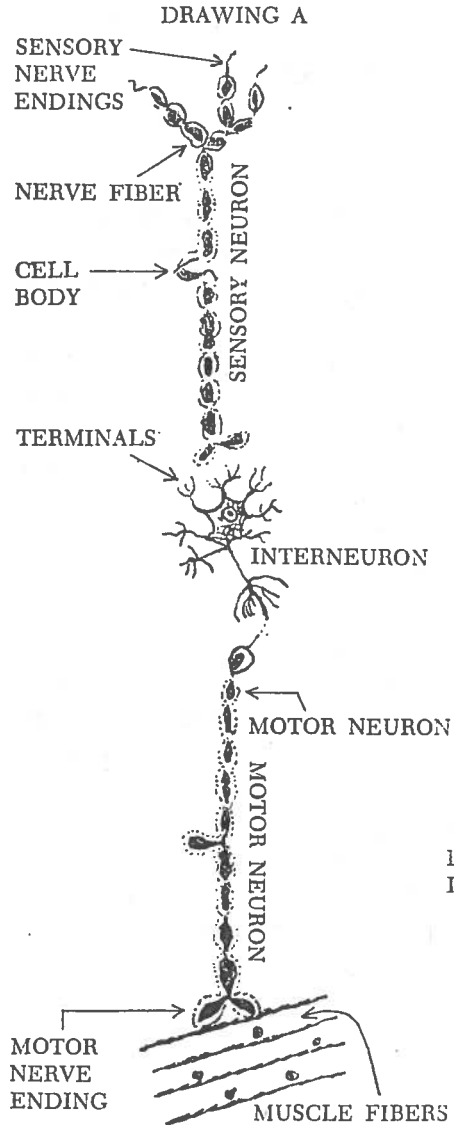
**THE BIOELECTRICAL CONTROL
OF NERVE PAIN**

As in the accepted theories and findings of nerve bioelectrical activities, we find the nerve's bioelectrical systems entertain exactly reverse galvanic energies to the measurements and findings of those existing in the blood and tissue cells of the living system.

Blood and tissue cells have a negatively charged sodium exterior membrane and a positively charged potassium interior. The outer fiber covering of the nerves has a positive charged sodium ion condition and a negative interior potassium charge, which is the exact reverse of the galvanic potentials found within the blood and tissue cells.

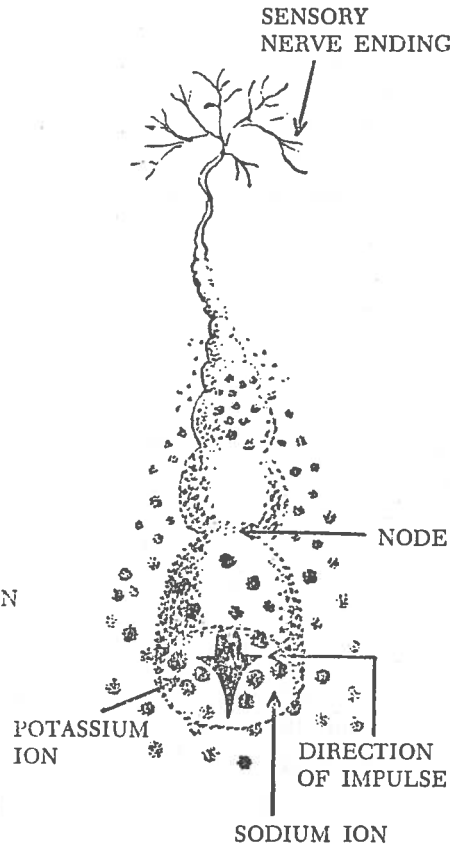
When nerve endings are affected by abnormal pressure, infection, disease, or a severed condition, they exert a potential energy that automatically informs the brain of danger, damage or pressure—internal or external. When we apply magnetic negative energies to this affected nerve state, there is a lowering of the positive external potential of the outer nerve fiber coating, resulting in a sedated action. This is caused by the lowering of the sensitivity of the nerve since its highly effective and sensitive positive ion potential has been reduced. The inversion of the positive ion charge existing on the nerve's surface is directed to the N pole magnetic energy field, which lowers the nerve's sensitivity and its positive ion sodium charge, resulting in less galvanic transfer of pain information reaching the brain for translation.

Shown on page 88 are drawings of the nerves and a brief review of their working order. These drawings are included for better understanding of the effects of negative energies of the magneto magnetic emissions on the nerves. Drawing B illustrates the power plant of the nerves, and Drawing A shows how this energy is transmitted to the muscles.



Above is the route of the simple result reflex from signal to actual movement of the muscle.

DRAWING B



Above is the energy plant of the nerves. The nerve fiber carries the bioelectrical voltages, as the fiber is insulated from the other complexes. The fiber is surrounded by positive sodium ions and has potassium negatively charged ions in its center.

The effects of applying N pole magnetic energy to the nerves act to lower their sensitivity. This lowering of sensitivity allows us a certain control of a pain condition. When we transmit S pole energies to the nerves they respond with a greater sensitivity to pain. We then have the reactions to the two separate pole energies of the magnet's negative and positive resultant effects.

Referring to Drawing B, the generation of energy within the nerve itself results when a sensory nerve ending is stimulated. The sodium ions are quickly admitted into the nerve at the node, this being a break in the insulation. The following reaction sets off a chain of pulse charges that extend from one node to the next and is carried to the center of the nervous system.

Referring to Drawing A, the energy from a nerve reflex, these being impulses, presents a stimulus that ends in the contraction of the motive muscle. This energy transfer is made possible by the neuron as it triggers this energy which flows along the nerve fiber through the cell body to an end in the terminals in the spinal cord. At this point the interneuron acts to transmit these impulses to the motor neuron where these impulses act to motor the muscle.

It is equally important we consider the fact that when there is no disease present, the use and application of the S pole energies can then be used for strengthening the nerves and their resultant responses. This offers still another possible new tool for medical researchers in restoring the nerves to normal or near normal activities in cases where such encouragement is needed.

Not only the nerves but the muscles also may be stimulated, if and when needed. The offerings that the S pole energies can deliver when applied to nerves and muscles also applies to all organs, glands, and segments of the living system.

The speed of the heart can be controlled, as well as its duties. Considering these values we find ourselves with a new and important tool to aid mankind find the long sought answers to many complaints which for generations have caused great concern. This also encompasses rodents, mammals, and all forms of life.

Since it has been found possible to stimulate, as well as control and regulate, glands, cells, and tissues, we then consider that these discoveries may encompass aid to patients suffering from many types of mental illness. Help to these persons could be considered since all food taken into the system acts in many ways to affect mental attitudes and the resulting reactions. Take as an example

the amino acids. Typtophan is one of the some 20 amino acids that are the building blocks of proteins which in turn manufacture serotonin. Serotonin, in part, is responsible for the means by which neurons carry messages to parts of the brain—it is an active means of information relay transfer. The loss of serotonin can activate an oversexual interest. A normal to excessive amount of this serum acts to encourage mental processes directed to the normal human behavior patterns, providing no other condition affecting mental behavior exists.

THE AMINO ACIDS AND RESULTANT PROTEIN DEVELOPMENT

Taking a sample of any of the many types of amino acids—the basic building block of the protein structure—and exposing them to the S pole energies of a biomagnet, can and will inspire a higher degree of energy and development resulting in a higher valued substance. These facts were discovered in the research toward the arrest of cancers by dual and separate magnetic pole field effects.

Everything that can be done with the positive S pole energies of a magnet to inspire strength and biological developments can, to a large degree, be reversed with the negative N pole energies. This was discovered after hundreds of exposures of these energies to the living systems' glands, organs, or segments, as each responded in the same manner.

The facts, as they now present themselves, are that when we use the N pole negative energies we do not stop the production or development of life systems, instead we simply arrest their actions or developments without the use of toxins or poisons to obtain this effect. This provides us with a far better approach to disease arrest, as in the case of cancer treatment. The methods presently used cause a radiological poisoning of the system, in addition to the effects to the cancer or tumor site. We know within the scientific community this may be subject to some arguments. However, the facts speak for themselves, and the overall improvements the science of biomagnetics offers will outweigh the objections of the few who may oppose its use. We feel if these objections should occur they would be based on the fact that those who make them do not have the practical work and, therefore, have as yet not obtained the full impact of this science and valuable approach to this work.

Chapter Eleven

MAGNETISM AND GRAVITY

Earlier we discussed the reactions magnetism, electromagnetic energies, and atmospheric energies have on man and the biological system. This also includes plants, which are living systems.

While we have up to this point discussed these energies and their effects on living systems, we will now show how magnetism and gravity are combined and react together, as we cannot have one without the other, and how these two energies affect all living systems.

We have shown that a magnet is composed of two forms of energy that are similar yet different in their energy charges and potential. If we take two long straight or cylinder magnets, then place the south pole of one magnet in contact with the north pole of the other magnet, they are no longer two magnets but have combined to become one magnet. There is only one north pole at one end of the magnet and one south pole at the other end of the magnet. Where they came together we find the Bloch Wall, the point of no recordable magnetism.

We may continue to add more and more magnets. When we do this the magnetic energy combines to form still only one magnet. At the direct physical center of all the magnets, regardless of how many may be used, we find the Bloch Wall has come into existence. The Bloch Wall, as we have shown earlier, is the mid or center of each and every singular magnet. It is the point where the magnets energies alter their spin, and each pole then spins in an opposite direction as to its electron movement.

The next interesting fact is that should you in any way break a magnet in two parts, each part then becomes a two pole magnet, regardless of the size or shape of the two pieces. Each part forms its own two poles—the north and the south pole.

Can a magnet's two potential energy forces provide us with clues to its relationship with the force field we know as gravity?

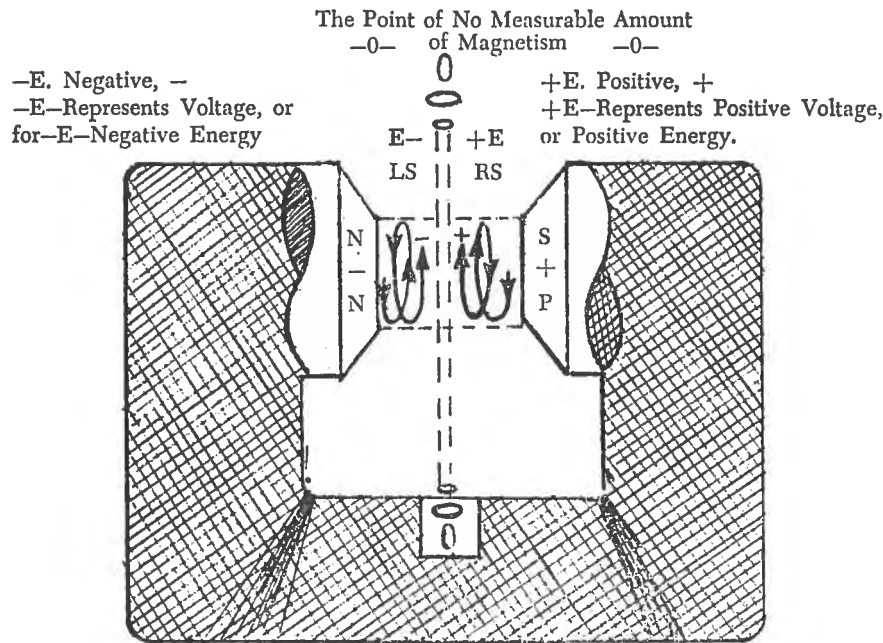
Is a magnet's energy a form of atomic energy?

If chemicals and other materials can be magnetically polarized, will their weight change?

The answers to these questions now appear to be a very definite yes.

In answering these questions our explanations are based on actual laboratory experiments that resulted in additional new information relating to how magnetism affects all matter, fluids, airs and/or gases.

For our introduction to our answer we present a drawing on this page. This drawing was prepared to show that the magnet's electron spins will not combine or merge. Therefore, they are not the same in nature nor are they homogeneous in energy form.



Note that in the drawing the north pole's energy spin is to the left, while the south pole's energy spin is to the right. These two energies cannot combine to form a unit of energy as we are led to believe in modern text materials. We have expressed voltage

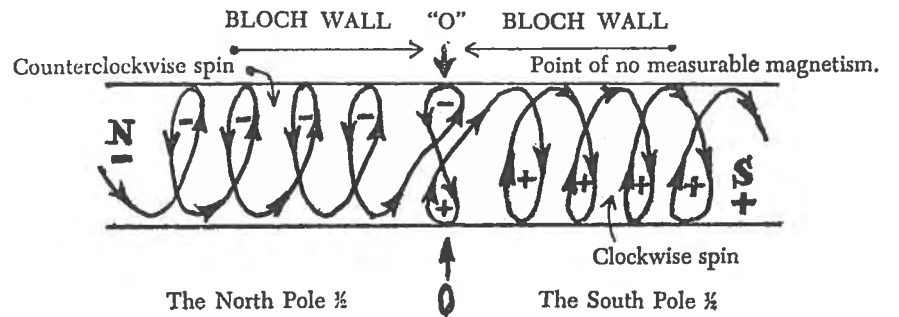
above as a possible first effect energy transfer. We have discussed earlier that the cables, or lines of force, travel in two directions not one. Voltage is shown by the letter E and the letter I for current. There has yet to be presented a suitable word for this dual force that acts as voltage and current does in electrical systems. The use of the term current, as expressed by I, is not the proper word, yet it will serve to identify the differences in part.

Continuing in our introductory material to the questions asked, study the drawing that is shown at the bottom of the page as the reason why the two poles of the magnet, their electron electrical energy spinning in opposite directions, fails to unify where they meet in the center of any magnet. That drawing indicates that at the center of each magnet there is a 180 degree phase change, a directional spin reversal. It is then at this point where the point of no measurable amount of magnetism can be recorded or measured. This point has been named the Bloch Wall.

However, should we study a drawing that has been published in a number of highly technical journals and books that attempt to explain this phenomenon of such a rapid, quick, unification of both reversal spin energies, we can see that while this is possible, it lacks the inversion of one energy to the other in the manner that energies unite under other similar unification of transmitted propagations as is shown in the drawing on this page.

THE BROKEN "8"

In the study of the unification of opposing potentials, we find on examining the energy there is the presence of the figure "8". We see this by making a visual study of the effects of the magnet's

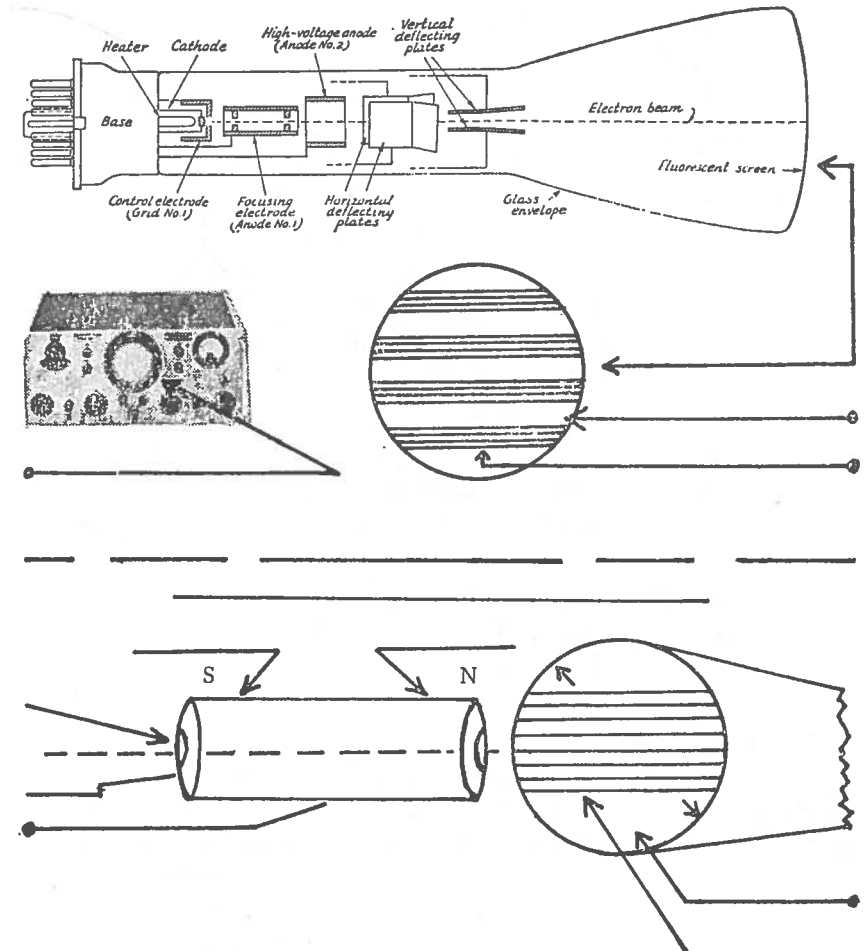


energies on the screen of a large cathode ray oscilloscope. We will discuss this on page 97. At the left of the drawing are shown the left-hand spin and circulating lines of force that are present in the north pole half of a magnet, marked N. Next, see the point midway, O, at the center of these lines of force. This is the point of no measurable amount of magnetism, the Bloch Wall. Note that the figure 8 appears as a broken figure 8. The upper part of this broken 8 shows a negative magnetic force, while the bottom is shown to have a positive charge and also reverses the direction of the spin. From this point on to the right, we find we have a right directional spin, or the start of the south pole's positive energy.

Referring again to page 93, the drawing and the figure 8, we are aware that when energies are found in a natural state there is a division between each potential or charge. This division is equal. We believe the long studies of visual evidences we have made offer a totally new concept of how the energies of the magnet combine to afford a unification of the two energies, yet at the same time act to keep them separated. This we can see by the broken figure 8 in the drawing on page 93. The upper half of the figure 8 being negative in respect to the bottom half, which is positive. Next, the N pole energies act to affect a negative potential, and the S pole energies then affect a positive potential. Consider that this dividing line, as in the center of the figure "8" shown, is thinner than a human hair in width. When this is considered compressed, encompassing the entire spins of force, each spin each circle of energy, it taxes one's thoughts on the mathematical perfection, unity and compression we must envision to present this graphical picture to our mind.

Consider other electromagnetic visual projective investigations, such as in the study of modulated radio frequencies and the characteristics of wave propagations. Again, by the use of a suitable cathode ray oscilloscope, injecting these complex signals into the cathode ray scope, and the visual display on a screen, we can make some valuable visual comparison studies on the complex wave systems and their displays. Coupled with the possibility of magnetic displacement of known wave propagation display, we can gain a greater understanding of the energies of the magnet, their form, shape, energies and spin direction, as well as the overall projection of these magnetic energies from the magnet poles.

CATHODE RAY TUBE



The cathode ray oscilloscope gives a visual representation of signals at both audio and radio frequencies and can therefore be used for many types of measurements that are not possible with instruments of the types discussed earlier. In radio work, one of the principal uses of the scope is for displaying an amplitude-modulated signal so a phone transmitter can be adjusted for proper modulation and continuously monitored to keep the modulation

percentage within proper limits. For this purpose a very simple circuit will suffice.

The versatility of the scope can be greatly increased by adding amplifiers and linear deflection circuits, but the design and adjustment of such circuits tends to be complicated if optimum performance is to be secured. Special components are generally required. Oscilloscope kits for home assembly are available from a number of suppliers, and since their cost compares very favorably with that of a home-built instrument of comparable design, they are recommended for serious consideration by those who have need for or are interested in the wide range of measurements that is possible with a fully equipped scope.

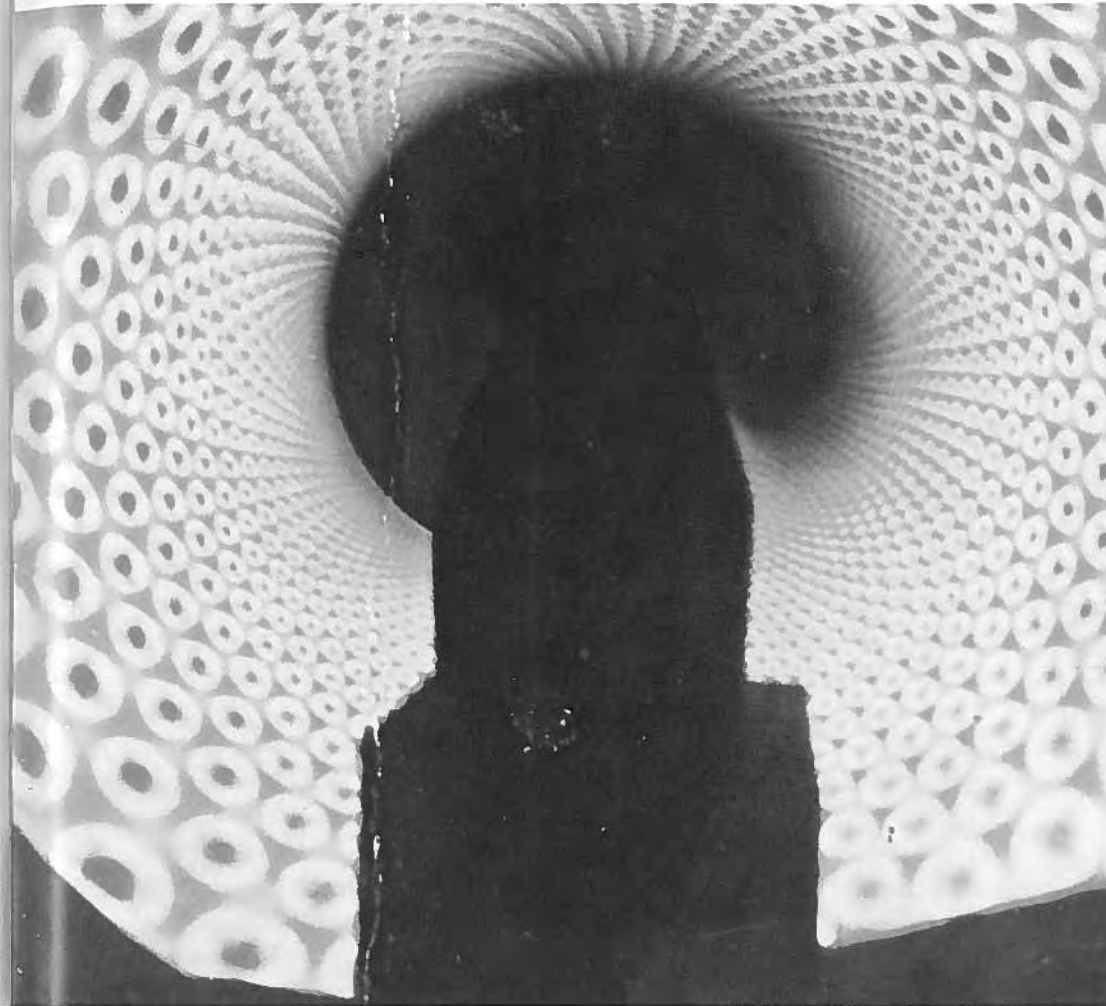
The heart of the oscilloscope is the cathode ray tube, a vacuum tube in which the electrons emitted from a hot cathode are first accelerated to give them considerable velocity, then formed into a beam, and finally allowed to strike a special translucent screen which fluoresces, or gives off light at the point where the beam strikes. A beam of moving electrons can be moved laterally, or deflected, by electric or magnetic fields, and since its weight and inertia are negligibly small, it can be made to follow instantly the variations in periodically changing fields at both audio and radio frequencies.

The electrode arrangement that forms the electrons into a beam is called the electron gun.

To allow a certain amount of technical understanding of what a cathode ray visual viewer system is, see the drawing, which provides a very primary basic design of this tube. The cathode ray tube was the first invention for display of electromagnetic energy and is the forerunner of the present-day large television tubes. The short description of this tube will allow a fundamental understanding of this visual means of examining electromagnetic energies that otherwise could not be seen by the human eye.

As shown in the drawing, to the left end of the internal parts within the tube proper, the section marked "Control Electrode (Grid No. 1)," is where the signals or their effects are introduced into the tube for visual display on the fluorescent screen located at the far right end of the tube. This is the viewing screen.

It is a fact that externally applied magnetic fields will affect the cathode ray beam generated by the electron gun as it strikes



THE ENERGY OF A MAGNET IN CABLES OF FORCE

This picture represents the color dot displacement of the cathode ray scan that is displaced by the external applied energies of a magnet. Note the geometrical perfection of the mathematically correct cables of force shown in this two-dimensional magnetic displacement photograph. The red center of each cable is considered to be the positive potential, as opposed to the surrounding color, which is considered to be negative potential. View each circle in the cables of force as though looking at the end of a cable that has been cut. Of further interest, note that the greater the distance the cables are from the magnet the greater the size of the cables.

the screen. This is done by placing one end of a cylinder magnet or straight bar magnet directly in contact and against the outer front surface of this tube. However, before doing this, supply the internal grid control with a horizontal bar test pattern from a television bar signal generator. We will see the horizontal and vertical bars appear on the screen. Then, bringing up the end of the magnet to the screen where the bars, both vertical and horizontal, are displaced they form an outline of the magnetic energy that is now passing through the glass screen and deflecting the pattern displayed on the screen. While this allows us to see with our eyes the spin of each pole, it also presents many new theories and concepts about the core of the magnet and its energies that are focused to extreme fine lines of force we have designated cables of force.

The discovery of the figure "8" was made by refinements to the above simple method in seeing the energy effects on the tube's screen. This geometric display prompted us to go deeper into the fact that at the Bloch Wall there existed a balance as well as the change in the unity of the pole spin direction. There is a neutral state at the Bloch Wall, as can be seen by the presence of two half segments of two energies. This then cancels out either energy, forming the Bloch Wall effect. During the instant cancellation there is also the point where one energy ends and the other begins.

In our developments with still further advanced systems that use the cathode ray electron gun principle, we have discovered that each end of a straight bar or cylinder magnet produces a cone shape of emitted energies. While very similar to an ice cream cone, its energies are not quite so pointed at the small end. The small end emits from the magnet's pole to grow in size, yet keeps a geometric perfect circle as it extends outward. We have measured this cone effect for many feet from a conventional magnet. It shows no point of return to the magnet. The straight line projection from the core center of a magnet is again a factor of great importance since this is also not traceable in a return to the magnet. This is a different cone effect than we first mentioned. Further, in discussing laws of the magnet, should we take a bar or cylinder magnet—long or medium long—that has been made with a hole running through its entire length, we would find in using the cathode ray contact to the screen, methods previously described, a compression of electron energy within the core of this magnet that would surpass any

artist's dream of perfection. There also is a point where energy is focused down to an almost microscopically small dimension of constant energy. This is still to be explored further. The technical name for the figure "8" is the Lissajous electronic display projection figure.

Geometric and mathematical laws show us that a 360 degree phase shift is possible with open-ended circles, as we have discovered with the figure "8", in complete separation of the two energies. This may also be computed to give us a fractional minus error, yet is very close in exact calculations.

There should not be any question in the reader's mind by now that both poles are different in potential and spin direction, which identifies the energy potential differences and the effects each can have on living biological systems. All of these experiments, outlines and development discoveries are reproducible by anyone, at any time, at any location, if these persons are so equipped to carry out the experiments properly.

CHANGES IN GRAVITATIONAL WEIGHT

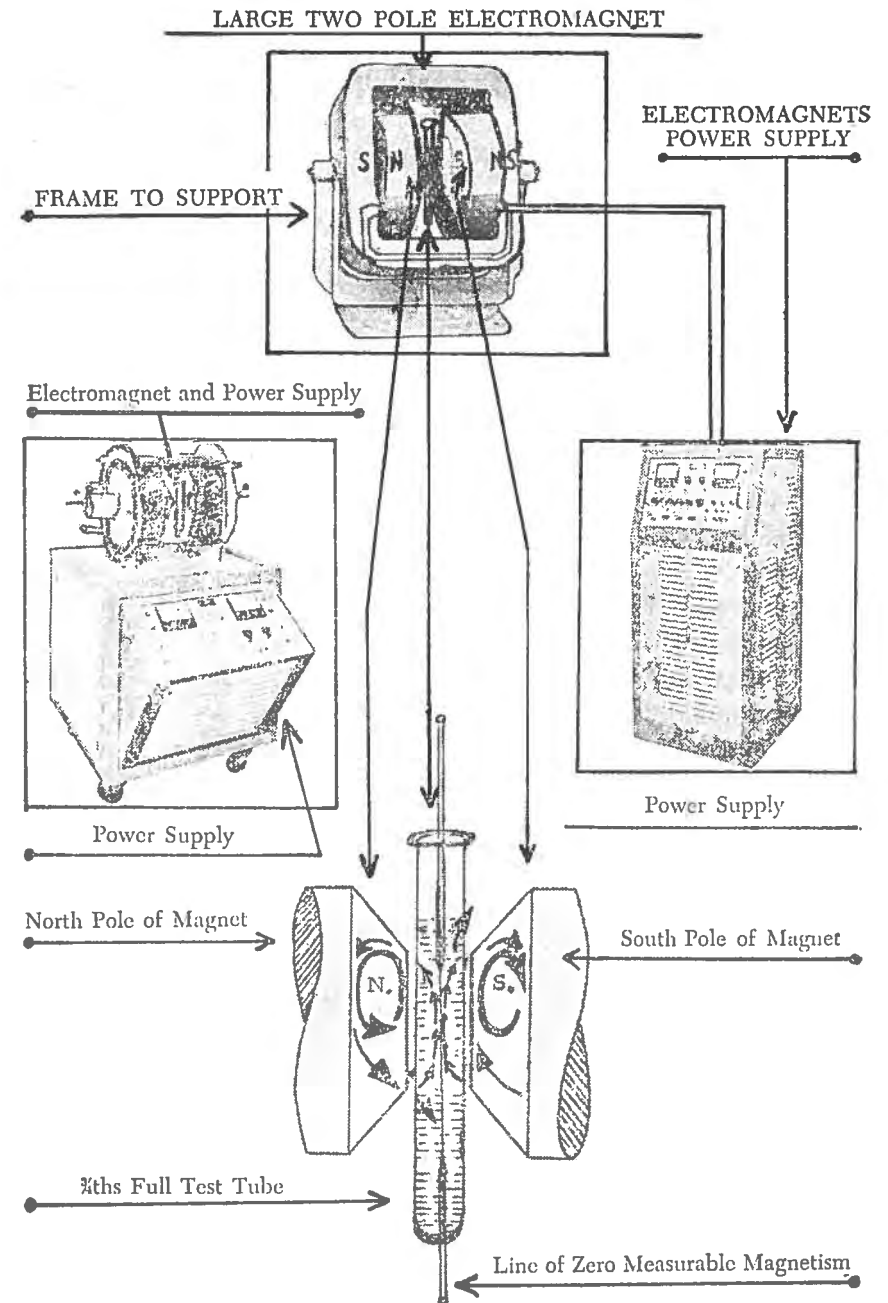
On page 99 we show a number of drawings to better outline and describe the effects of gravity and magnetism on the physical weight of chemicals, fluids and solutions.

At the top of page 99 we show a large commercial electromagnet connected to its power supply which converts A.C. voltage and current to D.C. voltage and current. This supplies the large electromagnet with D.C. current that makes the electromagnet a D.C. electromagnet. The effects of an electromagnet are not the same in many respects as the energies of a solid state metal or composition magnet. This we have found in other experiments which we may describe in detail in a further publication. Another D.C. electromagnet with power supply in table console is shown on page 99.

We now show a test tube three-fourths full of water or chemical solution or any solution of a fluid nature. It need not be a fluid but we chose a fluid for discussion.

The exposure of and treatment to fluids, liquids and proteins by this method has provided us with a great deal of vital research information that is far-reaching.

You will note on the study of the position of the test tube that the Bloch Wall again appears and we have two forms of energies,



each energy then treating or exposing the contents of the test tube with that particular potential of energy.

Next, you will note that the test tube is positioned vertical to the poles. As the pole piece electron spins affect a vortex of energy the force of this energy, the electrons spinning opposite each other, reacts to provide a pressure and a relieving of pressures in the vertical plane of effects on and to the contents of the test tube.

This acts to alter the physical weight when sufficient power of magnetic energy is applied to the sample between the two poles. This change in weight is in fact a change in the gravity. Many chemicals, fluids, proteins, not only alter and change their physical weight, their gravitational weight, but after a short time within the gap of the poles, act to alter the availability of the enzyme percentages, not in amount, but in digestive qualities. There is an increase in digestive results. Too short or too long an exposure destroys the effect. This may well account for the reason many of these experiments in the past have failed to be reproducible or failed in this respect from the beginning.

The S pole effects in part are to exert a pressure, while the N pole effects on the test tube contents are to draw away. Should we use a test tube of a size such as 8mm we would then find that at the exact internal center of the test tube a highly focused sub-miniature point of that pole's energies existing. There are many little-known effects that exist within the vortex of each pole. We have discussed only a few. When each effect is removed from the other, they act as forces that may be separated and used for a direct reason for desired results.

There are many chemicals that show a remarkable weight change when placed between the poles of the magnet. This is due in part to their active contents of ferric iron and other magnetic acceptable materials. However, inert fluids, chemicals and other materials also show this gravitational change in the overall physical weight results.

As an example, the NASA space probes provided us with similar reactions. When the space capsule left the earth's atmosphere, the sun's ray striking the sides of the capsule acted to supply a force, a pressure, that altered the course through space on the computed directional path of the space capsule. It was

then necessary to correct for this photo-electromagnetic pressure effect.

Our findings show that each pole, therefore, applies to whatever it is facing a form of pressure, a spin pressure, that affects the gravity weight of the sample.

FUNNEL EFFECT OF MAGNETIC ENERGIES

In the most elementary application of primary physics, one might then compare the field of a pole of a magnet as an inversion of a tornado, differing only in the fact that in the development of a tornado, the narrow end almost touches the earth in its downward movements and the larger vortex is above the earth. The magnet's vortex starts small at the end of the pole and enlarges as it travels through space. The diameter of the vortex is equal to the distance from its pole end to the widest part of its extended vortex.

Within the wide diameter vortex of a magnet's pole is a similar attracting vortex spin. The magnet's spinning tornado-like vortex contains two expressions of power and energy. The electron spin acts as a force of spin direction, and the inner or reverse vortex located within the center of the electron fields acts to form an uptake of energy or a downward thrust of energy. The reversal of the spin effect results in the reversal of the inner vortex reaction. Like the tornado, the magnetic fields attract any atomic molecular substances that are within the acceptable range of elements that would be attracted. This differs from the physical atmosphere action when we refer the overall reaction to the magnet's vortex energy to the similar form reaction of the tornado.

One elementary question that is often asked by students is "Why does a magnet attract and draw to its pole or poles such things as a straight metal pin?" This in itself may not seem on the surface to be a very important question, yet it is a forthright question and would require a modern physicist quite some time to give the correct answer. We repeat—a correct answer. The fact that the atoms within a pin or similar material matter are in part set into motion is not the answer for the attraction; here we describe the magnetic pull to ferric or other magnetic materials by either or both poles.

The approaches we have used, and in part explained on page

97, show us that the fields of either pole have within or without their formulations of vortex energies the indraft action effect that is close on inspection to the vortex of a tornado. In the case of a magnet's poles, the fact that there are two directional spin energy vortexes, we believe, opens new doors to a greater understanding of the atomic resultant molecular attraction of these compositive molecule arrangements in such attractable substances or matter. In simple language, it is the "funnel effect" of the two magnetic energies within the combined magnetic field that attracts materials having an atomic molecular attractive formulation, such as a simple pin.

A NEW WORLD OF SCIENCE

We could have filled these pages with mathematical formulas based on the textbook materials presented as the last word on the laws and principles of magnetism. This would have resulted in a book very valuable to a few, but the greater part of the scientific community and students would have been lost in a complex mathematical and geometric presentation. There have been more books written on magnetism than possibly any other subject in existence today. None offers the desired answers to the natural laws that are offered by actual physical and biological studies of the effects of magnetism on matter or on the living system itself.

We have found that what can be experienced to aid mankind in the biological effects of applied voltages and currents can be affected in a like manner with the properly applied magnetic pole energies of a magnet or magnets. In bone regrowth, fracture strengthening and knitting, by the inserting of needles into the bone, above and below the break and applying a low voltage D.C. and currents, the break is repaired in less time and is stronger than natural healing could have accomplished in many cases. Then by the proper application of the poles of a magnet or magnets above and below these fractures, a far better healing reaction can take place and quicker results. The control of pain and an overall faster better experience of desired results may be seen. Here, as we have stated before, the science of "Biomagnetics" needs no internal probing into the living system as does the UNNATURAL science of Acupuncture. Bone regrowth is also

possible by the proper application of magnetic fields; this is opposed to the administering of needles attached to batteries to afford the same or, in fact, less desired reactions.

The science of biomagnetics offers modern science a totally new tool to advance all sciences today, unlike the science professor who told his class there is nothing left to invent so be satisfied with what we have to work with today. Research means to search and research those knowns against unknowns, and this science of biomagnetics is the very basis of all existing sciences known to man today. Its very fundamentals are based on the laws of the atom, and the atom is in itself a small magnet. The atom is the building block of molecules, and the molecules in turn are the building blocks of all matter—airs, gases, fluids, solids or intermediate materials. When you enter into the research and investigation of biomagnetics or magneto magnetic energies you are entering a new world of science, one that affords a greater understanding of all natural laws governing energy, its applications in and to all fields of science.

Should you be presently engaged in magnetic research, we believe that the new developments and advancements to the knowledge of magnetics contained in this book will assist you in your continued efforts, regardless of your interests in the scientific applications you direct these findings.

ATOMIC ENERGY AND MAGNETISM

We have discussed many aspects of magnetism and the atom and would now like to offer in evidence these supporting facts. First, when we apply a strong electrical D.C. voltage and current to a coil of wire and insert a piece of ferric or magnetically acceptable material into the core of this coil, we have polarized the atoms within the steel or magnetic material to align all in one direction. According to the textbooks we have made a magnet.

However, if by doing this we have in fact aligned all the atoms within the shells of material that are subjected to this polarization of the atoms within the material, have we not also by doing this developed a form of atomic energy? It would appear we have. Second, it is not necessary to form atomic energy at the high frequencies in the angstrom spectrum that we normally consider

and think of as the high to superhigh number of angstroms, as past X rays and alpha, beta and gamma radiations. Atomic energy need not be the kind or nature we generally think of as having to be in these extremely high frequency spectrums. Atomic energy, as it is defined, is a source of energy that is the result of obtaining radiations from atoms in an excited state. Magnetism—the magnet's two poles, each has a frequency. We have discovered this and have been researching and studying the spectrum that these energies fall into for further clues of the effects of these frequencies in relation to the length, form and size of a magnet. While there is still much to be learned from these initial discoveries, we feel that we are nearer to the laws that govern magnetic and magneto energies, basically a form of atomic energy, yet at this time not considered in this regard. However, there is no doubt now that magnetic magnet magneto energies are closely related and are similar in many ways to the higher forms of atomic energy.

We believe we have established the relationship between magnetism, electricity, gravitation and atomic energy structures, thereby demonstrating a basis for the unification of these energies.

MAN BOMBARDED BY ELEMENTS

In the chapters we have presented so far, we have discussed many effects of magnetism on the living biological systems, and this encompasses mankind. All living systems are affected by the earth's magnetic fields. Earlier we mentioned that man is bombarded by the elements. The importance of this matter deserves a separate subtitle and further discussion.

All life forms are affected by the outer radiations of energy of the planets in space. Those nearer to us, like the sun and the moon, exert great pressures and electromagnetic effects on these living life forms, as do the resultant gravitational pulls and pressures that these outer space forms of energy apply to earth and all material matter. This includes waters, airs, gases, solids and semisolids. Nothing escapes these unseen forces. Man's environmental attitudes are affected as well as his or her physical feelings of welfare, even to his or her general health patterns.

As an example, in the Soviet Union they have built special

shielded rooms that resist the effects to a high degree of outer magnetic influences. They have discovered that, as an example, persons suffering from nervous and other complaints, including forms of heart disease and those suffering from mental ailments, all react adversely to the effects of sunspot storms and changes in the gravitational effects of the moon. The Soviet scientists then change the medications because of the effects these outer electromagnetic and gravitational energies have on the sick and the weak. We should look into this. It is an important matter and one that has been overlooked in many countries far too long.

To better show the ionosphere man lives in and how by its changes these changes affect the health and well-being of all living systems, including plants and even microscopic organisms, we present a number of simple drawings on page 106.

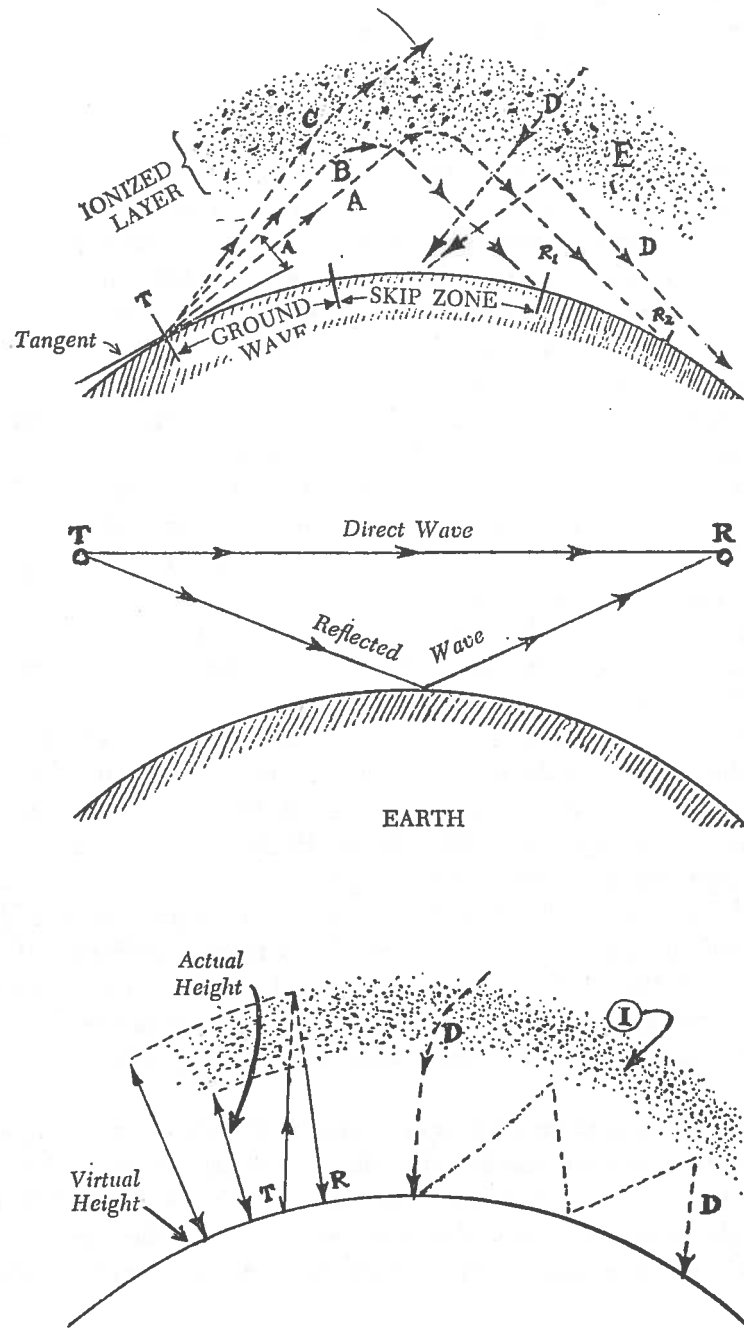
Drawing A shows by the shaded areas the ionosphere. This is one of a number of such layers that surround the earth at varied distances from the surface of the earth. They act in part to filter out harmful rays from space.

As they then fulfill this duty they also act to keep certain energies within this protective shield as well as down on the surface of the earth proper.

These natural ionized layers vary in height, and this varying of height then acts to influence radio waves and TV signals that on leaving the earth by the transmitting of these electromagnetic energies we call radio frequency waves. From the station antennas they go upward, and when they reach the first ion barrier they are reflected back to earth. This is, in part, how radio waves, radio signals and programs are able to reach so many locations within the scope of the power of the station and the frequencies used. This is broadcasting electromagnetic wave propagation to the listeners and viewers who have suitable receiving sets or equipment.

In the science of probing space, the transmitters are designed to penetrate these ion shields, the ionosphere and its many layers, to go out into space for this type of radionic exploring. These very high frequencies are also returned through the ionosphere back to large radio telescopes for detection and computerized data results.

Refer to drawing A on page 106 (top); the shaded area entitled



"ionized layer" presents a graphic example of the many such ion shields that surround the earth. Dotted line C is to show that at extremely high frequencies, space-type exploring transmitters may penetrate the ionosphere. Dotted line A shows how the conventional medium frequency range broadcasting stations signals are reflected and bounced back to earth. The points of the reflection and return path to earth are shown by the dotted lines. In between these bouncing and reflecting signal paths are the zones of reception, in part. This is the wave phenomenon propagation that explains the radio signal's ability to reach so many viewers or listeners.

Further, we note that in drawing A we show the "skip zone." This lies between the reflected waves. Reception can be very poor and signals difficult to receive that are in this zone or skip area. Yet it has its advantages also, as by the ability to skip, the range, for example, of a medium short wave (medium high frequency) radio or TV station can be greatly extended. And stations that normally cannot be received can then be received when the ionosphere layers above the earth rises or lowers. These ion shields act in part like electromagnetic mirrors, reflecting back to earth signals that otherwise would go into deep space and perhaps never return to earth.

Next refer to drawing dotted line D in the same drawing A. This represents ions energies. They can and do penetrate the ionosphere shields that protect mankind and all living systems from the harmful energies of the sun. They deflect energies from the moon and other planets in outer space. Some energies do get through to the earth as shown by the dotted line D.

Drawing B is presented only to show the geometric wave propagations. Drawing C on page 106 is a simple extension of drawing A to show the reflective abilities of the ion layer effects.

We can now see that the ionosphere then acts to protect all living systems from the deadly rays and energies that would destroy life as we know it if the ionosphere was not acting as a protective shield around the earth.

Within the earth's ionosphere, the lower atmospheric ionic atmosphere, is the density of positive energies, such as the massive positive charges of positive ions that are present in clouds. And when storms result, when the clouds become supercharged,

the positive ions act to make their presence known to man and living systems by the increased density of positive ions in the atmosphere. Man's health and that of animals and also plants are governed by these atmospheric charges. Mental depressions are one result of too much positive ion concentration. While in a negatively charged environment man's welfare, outlook on life, mental abilities are upgraded. The negatively charged ions a person finds so pleasant then act on the living system when diseases, complaints and weaknesses are affecting his or her health. A better recovery of many illnesses can be obtained in a negatively charged environment. The positively charged environment acts to slow recovery, affects the lowering of mental activities, making it more difficult to think and function. These two forms of atmospheric environmental charges or energies reflect the same effects as the north and south poles of magnetic energies. We have proven this time and time again in animal and rodent research, including large animals that have similar blood types to man, the same organs and life functions. The environment man and all living systems find themselves in from day to day, hour to hour, is in constant change. Man is in effect a "Biomagnetic Animal in every respect."

Chapter Twelve

THE HUMAN BIOMAGNETIC AURA

Man, animals, plants or bacteria all have a separate and different biomagnetic aura. This was taught long ago by the ancients and is today subject to scientific proof. Each living thing has the ability to transmit from its body certain electromagnetic energies. The ancients believed that persons who were sensitive to these colorimetric energies could see a flow emitting from the body. By such means they could then identify illnesses from the change in colors presented by locating diseased or infected nonoperative organs and parts of the body. This art is still practiced all over the world.

The scientific community has generally refused to investigate this phenomenon, placing it in the background as more of a belief in the supernatural rather than having scientific supportable fact. However, this may now change as we have scientifically proven that the living system, regardless of its nature, emits an electromagnetic energy.

In determining these energies we have used modern electronic detection and recording methods to measure and record these emissions from the body of the living system. By the research into electromagnetic energies and their effects to the living system, we have also researched those electromagnetic energies that living systems emit. This should change the old concepts that this possibility exceeded the power and laws of nature as the words *superstition* or *supernatural* imply.

Our work that follows was placed on display at the Westfield Conference in London a few months ago and was received with great interest by the scientific research community, including medical and applied science researchers. We shall now present our proof that the human and/or living system can and does emit electromagnetic energies of many different frequencies.

THE LAYING ON OF HANDS

Many scientific men and women in research today have discredited the possibilities of any scientific proof, overall effect or reaction of the ancient and recorded healing approach, "The Laying on of Hands."

It is our opinion, based on scientific findings, that this science will prove to be a valuable contribution to mankind.

Within the text materials to follow we shall show the recorded electromagnetic energies on the area of the body of man. These recordings also apply to the body of woman. We will also show the potential power and force that is present in the palms of both hands and fingers. The human body is a vast complex of energies and frequencies. We can compare the palms of the hands in their application that affords an exchange of natural body energies from one person to another. We will show by charts in this chapter the different potential force in each hand should that hand rest on the body of a person suffering from a pain, fever or complaint. There would be a proper reaction and a transfer of energies. Should we wish to become more technical we would say there is an inter-exchange, a modulation, of both body energies.

It has been shown that when a living system is weakened by the effects of sickness that the body is weak also in the average electrical energies at the location of the difficulty that the person is then experiencing. Should a healthy person apply his correct palm to that ill person there is an exchange of normal energy to the lowered energy, and a feeling of well-being is experienced by the person who is ill. We do not say cure. We do, however, make this positive statement as to recordable facts. There is a feeling, a sense of comfort, of well-being, or of relief.

The human study of a mother's care and attention of her baby or the child presents to us that inborn inner instinct of caring for and offering love, devotion, strength and providing the baby or young child with every possible help with or without the mother's knowledge of the "Laying on of Hands."

It has been of great help in our research to study the care of the baby or child by the mothers. One of the observations made was that when the child is sick, ill, or suffering from an ailment,

such as having a slight fever, the mother will rest the back of the right hand on the child's forehead. Now, what is happening, and probably unknown to the mother, is that she is applying the negative energy, the negative microvoltage that exists on the back of her right hand, to the fevered forehead. In our years of research into the human behavior of man and animals, we note this happening takes place and the results of this laying on of hands is one that offers the baby or child a high degree of comfort. This has been observed hundreds of times. It has resulted in the same effect, a calming, soothing reaction to the subject.

Many mothers will apply the palm of their left hand to the subject's forehead. There is also at that point a full negative electrical, or electromagnetic, energy present as the palm of the left hand is negative opposed to the palm of the right hand that contains a positive energy potential.

In the presentation of the charts of the outlines of the human body and its extended members we shall present in this chapter, the recordable voltages also encompass electromagnetic energies and a modulation of varied changing frequencies.

Further studies have shown that on recording the human voltages the back of the head has an external measurable positive voltage. The mother has shown us that when the baby is weak she places her right palm under the back of the baby's head. This is applying a positive electromagnetic energy to the upper spine nerve column and the back of the baby's head which has a natural positive energy potential or charge.

Here we see that while the mother is not an advanced student of science she has inborn natural talents and knowledge that rest in the subconscious mind. These inner and all natural instinctive reactions will provide the exact and proper energies that flow between the mother to the child as the need may be.

Here, for a point of reference, we note that the palm of the right hand offers a positive energy opposed to the palm of the left hand that offers a negative energy. Reversing the energy, we see that the back of the right hand is negative opposed to the back of the left hand which affords a positive energy. It is of the utmost importance in furthering the understanding of this natural and applied energy that we be fully aware of the subject's own natural energies. For example, when a bone is broken, wherever

it may be located, the body's own natural electrical system then affords to that exact point of the break a much higher than normal negative electrical energy. This returns to a normal energy level only after the bone has reknit and healed. Thus the body supplies the correct energy as to positive or negative according to its demand to offer help and assistance to its own part or segment that is experiencing trouble.

In our research as to the effects of magnetism and its two separate pole energies to the living system to afford help and assistance, we discussed the north pole of a magnet supplying a negative electromagnetic form of energy. This is opposed to the south pole of a magnet that offers and supplies a positive form of electromagnetic energy. Again we see that a magnet's energies are an all-natural energy form similar to that existing in and from the human system.

During the association with Dr. Yerkes of the Yerkes Experimental Research Laboratories, then a division of Yale University, your senior author noticed the same applications of the hands of the monkeys, apes, and species of animals in that category, were applied to their young when sick, weak or ill. This points to the fact that even these species of animals react similar to the human mother. Each has a natural built-in instinct of what to do to help and care for their young.

THE HUMAN AURA

Here we examine the existence of an energy form that surrounds the human body and exteriors of all living systems.

Research studies released some years ago by the Eastman Kodak Company are helpful in our presentation. These studies dealt with the dark red light of special lamps, infrared frequencies, as applied to the naked body of man.

When the body's outer exterior was radiated with this almost invisible frequency photographs were taken in a few minutes with infrared film in a camera. In the photographs, appearing as black and gray lines, were the arteries at the surface of the body and large exterior and interior veins. The further distance from the heart and lungs that the blood circulated more oxides were formed

in the blood. This oxide increase was due by the use of the oxygen taken from the blood by the body's functions.

Where the body had a poor circulation, the pictures presented that part as dark gray or black in color. This was due to the lowering of the body's temperature at that part of the body. Due to the lack of heat at that part the infrared film picked up this difference in temperature on the body's surface and it was recorded on the film as dark to black. This weakness in the body system, shown and analyzed by infrared photography, is evidenced by the same lack of color, black, sensed by those who see the Human Aura, as a weakness in the human system.

Certain people have far more sight sensitivities than other people. The authors do not pretend to understand all of the factors that assist the extraordinary ability to see the Human Aura. The same is true about the ability to practice the "Laying on of Hands" effectively. However, these abilities do exist and it is a fact supported by scientific experiments and findings.

To further support there is surrounding all living systems forms of energies that can be recorded as fact and not as theory or superstition, we submit from our laboratory research the following findings. We have measured from a fraction of an inch to greater distances from the surfaces of the body energies that are in a sense a radiation of electromagnetic energies. This statement is made in this broad manner as these energies are composed of many different forms, frequencies, microvoltages and currents. This does not change the fact that they are present, projected from the surface of the body at all points. Following the curvature of the physical body proper, again we see the similar form which those who state they can see this energy form describe as emitting from the body. A number of these gifted persons tell us it is possible to see these energies surrounding the human body, and even see the energies surrounding any form of living system such as animals and plants. This they advise can only be done in subdued light. However, the outline of the energy they describe follows our basic scientific research measurements and resultant findings that can be reproduced at any time anywhere under those certain light subdued conditions and environmental surroundings by the proper trained person.

COLORS AND THEIR EFFECTS

Colors are composed of frequencies of energy. Each color as we see these energies with our eyes differs only by the number of cycles or vibrations per second each color has or contains.

The Color Red, in actual agriculture research experiments, acts to promote health, life and energy. This was confirmed in experiments where small growing potted plants were placed under these color lights. Red gave life, energy, and a higher degree of growth and development. Some of these similar experiments were conducted at the universities in California a short time ago.

The Color Green is the life-controlling color, the reducer, the arrester. Plants placed under this color acted to present positive scientific laboratory resultant facts by controlled experiments.

The other colors are moderators of the two colors, Red and Green. Comparing the colors Red and Green to the forms of energies as presented by the two separate and different poles of a magnet, we find that Red is like the S pole energies and Green is like the N pole energies of the magnet. Positive energy in whatever form acts to promote life or it can overpromote life to a point of depression. Green, as the N pole of the magnet, acts to arrest life in the control of life forms. Here again we see that all life on this earth of ours responds to the two forms of dissimilar energy.

In the latter pages of this book we will show where the positive and negative energies of man are located. We note again that we can no longer consider or abide with the old, yet current thinking, that the ancient sciences hold nothing more than superstitions. Far from this line of thinking is the need for further and extensive additional investigations into the ancient sciences.

MAN'S BIOMAGNETIC MIND

The brain and the mind of man differ in that the brain is a physical part of the body, this opposed to the mind which is the active working, thinking, feeling, results of the brain's functions.

Considering this it is in part the mind that acts as the computer and the brain the mechanics of that mind or computer.

Both the mind and the brain are electromagnetic in nature. They are electrochemically operated. The brain is like a small radio transmitter, and the mind is the voice that is modulated on the carrier of the transmitter. Therefore, when we examine both we can see the results, a thought-controlled small biochemical activated energy supplied transmitter of conscious thought patterns with the back-up transmission of the subconscious mind.

We have measured the brain's output of electromagnetic waves of energy. The brain has a number of very low frequencies that are generated within the brain. These low frequencies act to carry the mind's thoughts and reactions to the varied parts of the body of man and animal. The same is true in lower creatures. We find the frequency number 7 (7 cycles per second) as a good basic fundamental frequency the brain affords the body that can be measured and recorded on the surface of the head of man.

Man's mind can act as a receiver as well as a transmitter of thought information. The study of thought transfer is under serious research in a number of countries today. This was prompted in part by the space age research efforts. In Russia serious research has been going on for some time concerning the possibility of men on earth and in space being able to transmit key signals from one to the other. Both Russian and American space research has now found this is possible. Therefore, the brain is, in fact, a transmitter and also a receiver.

The subconscious mind has long been a mystery to man and to scientists alike. The study of animals and their natural reactions to dangers, the sense of dangers present yet quite unknown to man from the lowly mouse to the large species, the results of the subconscious mind's ability to override the conscious mind and so to speak ring an alarm bell within the conscious mind, is very real in every respect. We find that the subconscious is a higher frequency mind, one that is not burdened by the work load that is placed on the mind by the thinking mechanics of man's brain or the animal's brain. This higher mind, this higher analyzing mind, can sense and feel environmental happenings and be free to analyze matters, conditions, not only those happening at that time but also to foresee in time what might happen as a result of the actions of the personality and reasoning of that person. We base these projections on what we have observed over many years in the

study of lower animals to the super reasoning anthropological species. Man is somewhat less developed in the natural effective sensitivities the animals show as man's environmental surroundings have taken away the inborn development of man's "Early Warning Radar" scanning network, so to speak. The animals, however, like man, are not always in the state of alert. Yet there are certain animals that operate a 24-hour-a-day early warning system. The fewer defenses the animal has against its environmental dangers, generally the greater its ability to sense dangers.

As is the conscious mind, the subconscious mind is just as important to live and survive. To have only a conscious mind would remove any sense of dangers or detection. There could be no instinct for the future and probably no inspiration. Certainly, the subconscious mind plays an all-important part during the life span of animals and mankind.

PARAPSYCHOLOGICAL-BIOMAGNETIC INVESTIGATIONS

What part does magnetism, electromagnetics, play in the field of ESP (extrasensory perception) or the science of parapsychology? If we examined the term extrasensory perception we will or should find it incorrect as to its meaning, as all living systems have a sensory perception. This we have discussed in the last few pages. The "extra" term then would properly mean the development of the senses or sensory perceptions that are an inborn quality the living system possesses.

Can external magnetic energies when applied to the animal or man act to encourage or depress the mental sensitivities of the mind and the functions of the brain proper?

Earlier in our book we have shown the effects of the two pole energies of a magnet on the embryo, the newborn creature, and during its stages of physical development. Indeed, our findings indicate that externally applied energies can and will affect the development of the mental processes of the mind and the brain of all living systems.

It is with deep regret that we read reports from outstanding scientific investigators in their books, papers and reports that deal

with this subject. They discuss the only effect they see from the placement of a magnet against the head of man or animal is a sharp flash of light, seen at the edge of the eye on placing and removing of a magnet's energies. This report of effects is also to be found in current space agency research reports. This can be a very dangerous as well as incorrect conclusion.

In research experiments with small and advanced animals and man, in the case of willing subjects, we have found that the magnet's NORTH POLE ONLY, when applied to the brain, can and will upgrade the senses of perception.

Perception here is meant as the overall normal inborn senses of animals and man alike. We find that the north pole, which is the negative energy as its effects to all biological systems, can and does possess the ability to pass through the head, the skull of man and animal, and act on the inner constants of the brain. This acts to cause a stimulus to the hemisphere of the brain, the reasoning mind itself. In our studies of this interaction we have discovered that when this form of energy passes unhindered into the innermost part of the brain it acts to arrest certain pressures on the brain by a reduction of inner and outer electromagnetic reactions to the brain. This relieves biological biochemical pressures as such from the thinking and reasoning mind. This then as a result has shown the ability of the man to think, reason more clearly and has aided in the learning and capacity of the mind and the storing of that learning in the mechanical segments of the brain. This statement may appear as being unsupported by other scientific findings. However, our investigations have been extensive in exploring the brain's and the mind's reaction to magnetic fields. There should be prompt serious investigations as to what can be done in this field in the future. Many governmental agencies of a number of countries, including the United States, have been for some time upgrading their research and investigations into ESP and parapsychology as a means of interspace communications and also into other phases of use in fields of mental telepathic data transfer.

When we consider that the mind, the brain as such, does send and receive intelligences by electromagnetic energy waves, we can see how important this science of magnetics is to man. Your authors

predict that the future use of magnetic energy applications will result in a new and better understanding of "parapsychology" in science.

WARNING

There is within this science certain dangers that must be considered. In the use of S pole positive energies in brain research we have discovered that these energies can overstimulate the brain and the mind. Also, there may be hidden defects resting in the physical or mental aspects of the brain and mind, such as growths or types of abnormal behavior, which the S pole energies will encourage in unnatural development. The S pole energies in brain research should only be used by properly trained persons learned in this new science of magnetism.

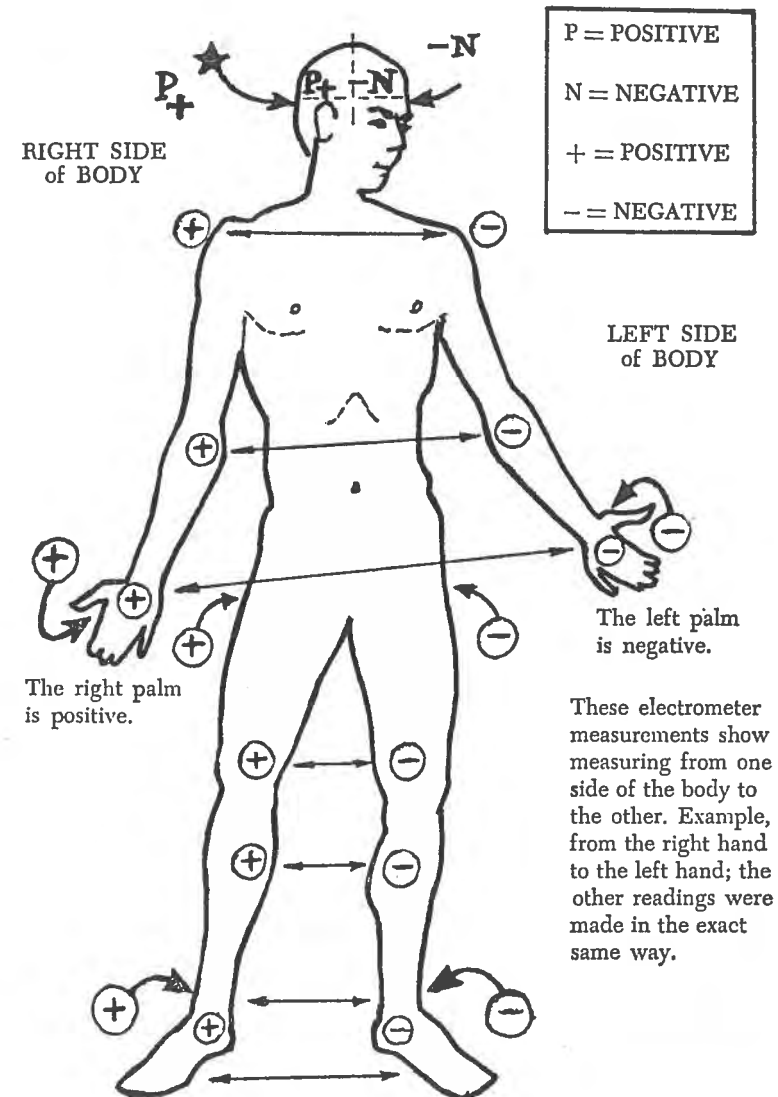
At this time we also emphasize the dangers existing on improper use of either the S pole or N pole energies. Without the proper understanding and training necessary, the use of either energy on a living system can be dangerous and ultimately fatal. Students, physicists, medical men, scientists, should exercise caution in their work and the same warning here, and more so, is given to laymen who read this book.

Your authors have taken years deciding whether or not to release the findings in this book. The decision to release these findings was not an easy decision. Science can only progress by its development and application of new discoveries. Men may use or misuse science. The nature of man still resides in his behavior to his environment. For all the danger in this new science of magnetism your authors must look to all the good the science holds for humanity. Your authors live with their decision as humanity must live—or die—by its decisions.

MEASURING THE VOLTAGES OF THE LIVING SYSTEM AND THEIR LOCATIONS ON THE BODY

On page 119 we present an outline of the human body. For our purposes this outline and subsequent outlines in this chapter will also be a reference to the female body and to animal bodies.

Our laboratory experiments and findings have shown that the



surface voltages indicated give interesting research information in determining where to place magnetic energies near the human body. Other uses of these recorded voltages in research may be apparent, though we confine our discussion here to our expressed subject.

As we have stated earlier you do not just put a magnet to the body and expect the desired results. If magnets are used for desired results they need to be of special construction, shape and size. The strength of the energies varies for particular results. As important as the strength in gauss units is also the length of time necessary for the specific application.

Studying the charts in this chapter the sign + or P means we have a positive voltage at that location on the body. The sign - or N means the negative voltage at that location on the body. For example, we show the electrical potential in the palm of the right hand as positive while the electrical potential in the palm of the left hand is negative. We measured the voltage of each by attaching two electrodes, one to each hand. The positive and negative polarity is then registered on the dials of our sensitive electrometer instrument developed for this research.

BIOMAGNETIC BIOLOGICAL ELECTRONICS

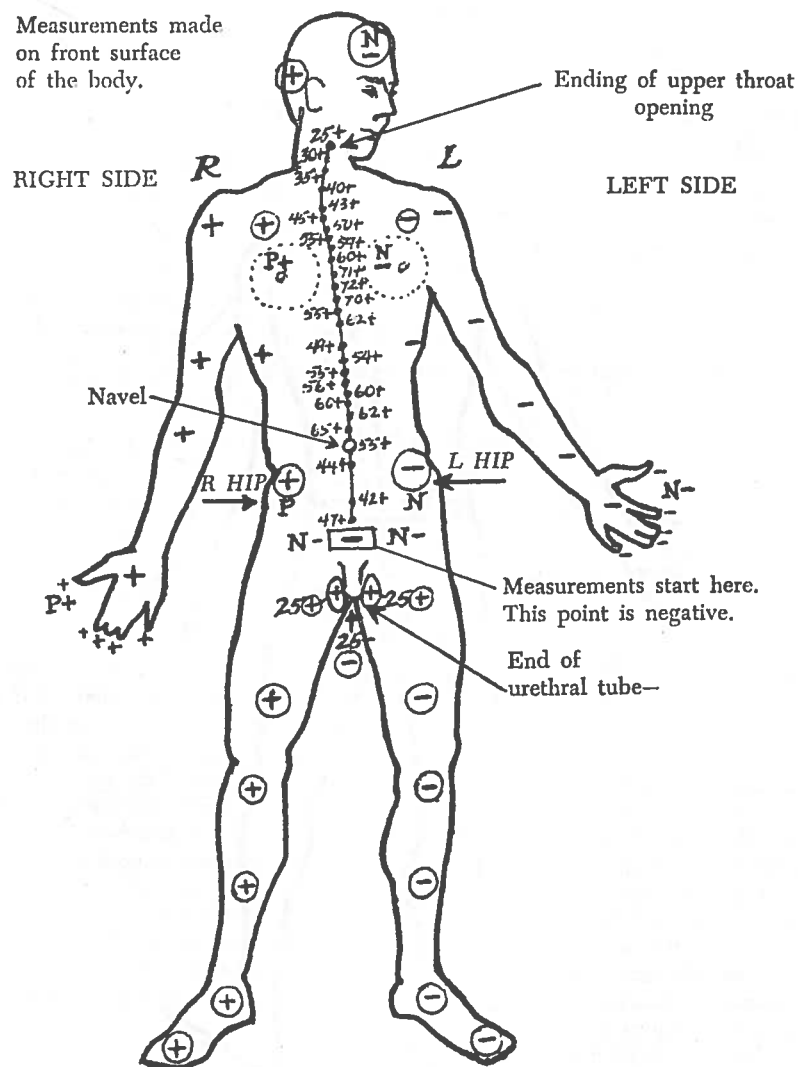
Referring to the chart presented, our findings indicate that the extended members of the right side of the body are positive electrically. This applies to the hands, arms, legs and feet.

In looking at the head, the front of the head is negative and the back of the head is positive.

It is of importance that you notice that the right hand and arm, although positive, in respect to the left hand and arm is negative, carry still another charge at various locations in the bone structure of the members.

This first chart shows lines crossing the body in a straight direction with an arrow at each end, for example, from hand to hand. This is to show the measurement of voltage was taken from hand to hand, from the one to the other in relation to each.

In the second drawing of this chapter, on page 121, the right hand, arm and side are indicated by the large letter R and the left hand, arm and side by the large letter L. This drawing shows



the average voltages taken at various locations of the body. In the male figure as shown measurements are given from the crotch of the body a little below the end of the urethral tube ending, and the readings are also shown for the male testicles. In the female body a negative reading is slightly above the urethral opening. On the chart as shown for the male the testicles are positive, the urethral tube is negative, thus the negative plate of the electrometer was placed at this lowest point.

As we go upward on the chart we see the various voltages that were recorded, the highest frontal voltage measured at the point near the heart, shown as 70 positive microvolts on the diagram.

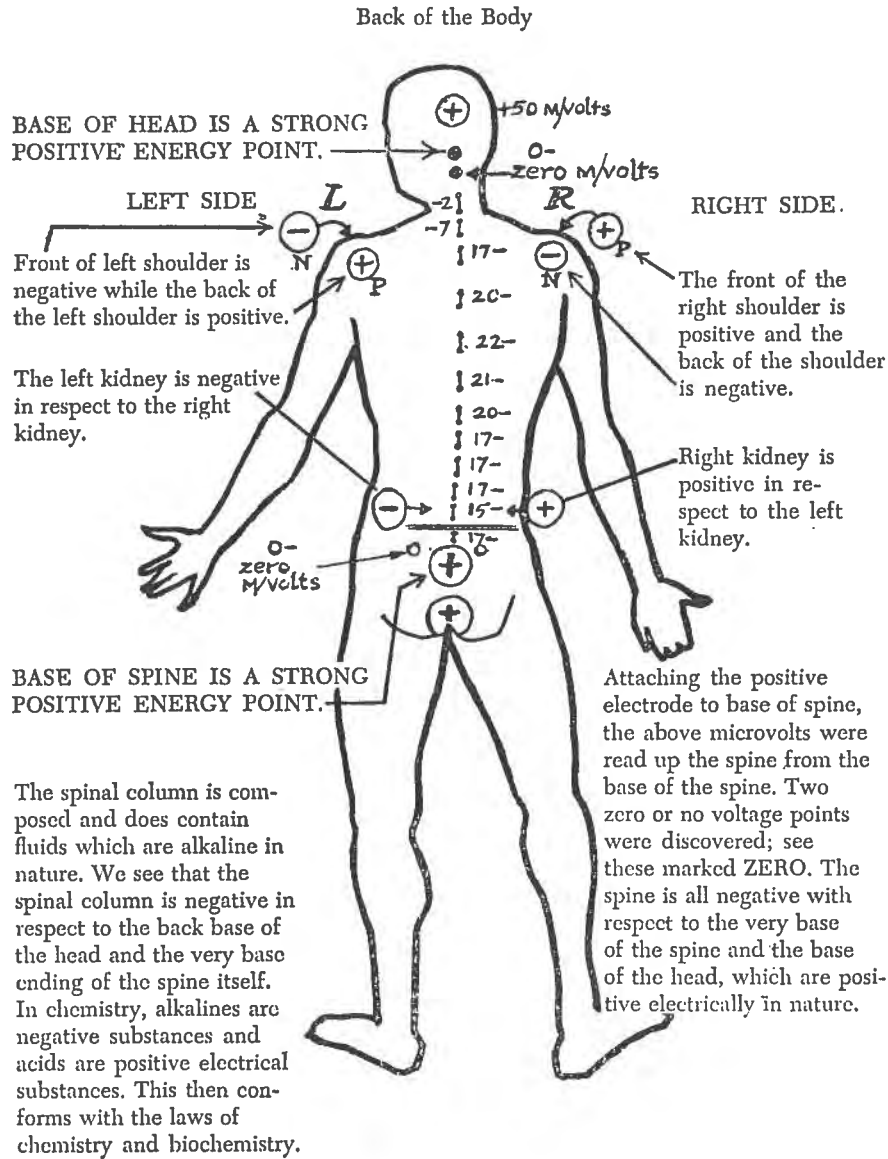
These voltages can change from one person to another. This is very important when considering the many applications from these discoveries. What we show are average voltages from testing a number of subjects.

On the charts we see that the spine is negative and that the exact center of the front of the body is positive energy. The frontal crotch is negative with the back base of the spine, which is positive.

Looking at other relations we see that the frontal central length of the body is positive with respect to the frontal lower crotch. The forehead or front of the head is negative with respect to the back of the head, which is positive electrically. The readings are all direct contact surface voltages, checked time and time again for polarities at specific locations.

Of interest are two locations where no noticeable voltage readings were found. One is shown above the rectum near the base of the spine, and the other location is shown at the connecting link between the skull and the backbone proper, the beginning of the full-length spinal column.

These two zero points on the human body are the electrical equators of the body's electrical and electromagnetic divisions. At these points is where the polarity of the voltages change from one form to another form. For example, we have a positive voltage, then a lessening of the voltage to a no noticeable recorded voltage before a swing over to negative voltage. Notice the similarity to the straight bar magnet and the presentation of the broken "8" discussed earlier. This recording of the two areas with



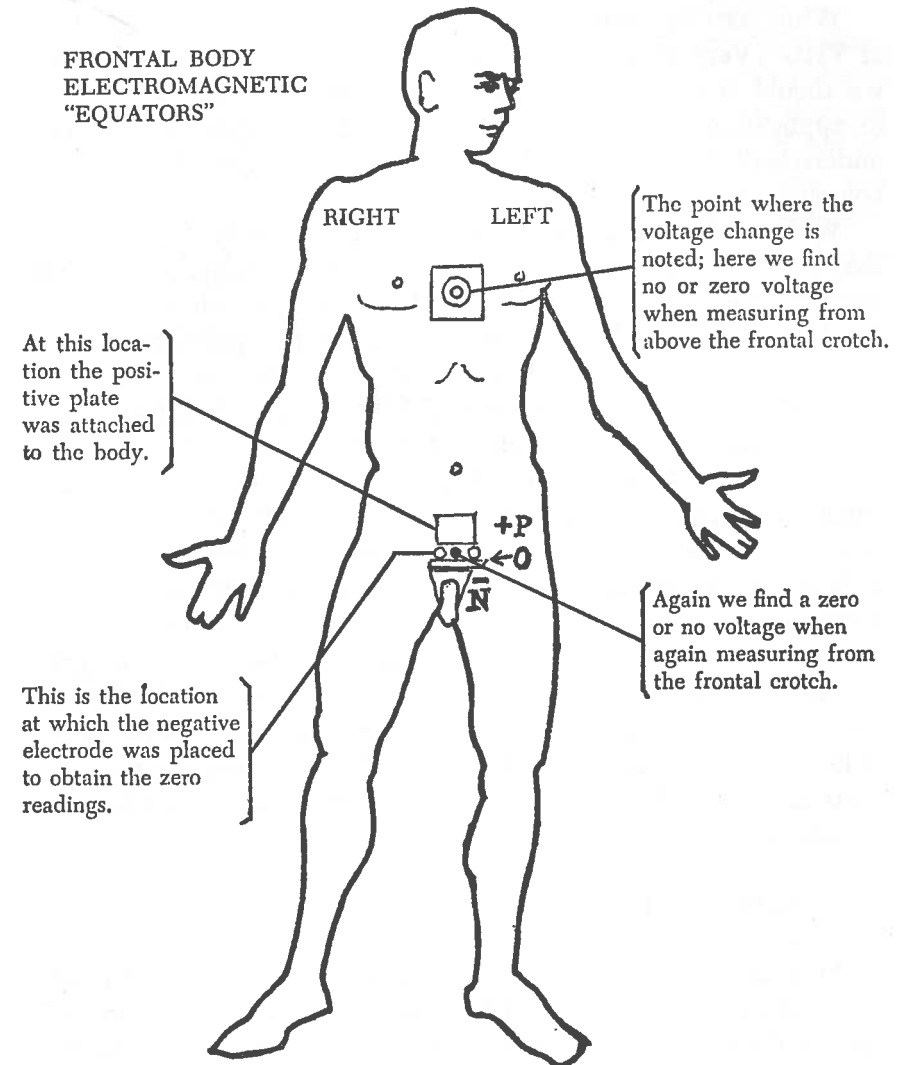
no noticeable voltage, polarity, or energy is also similar to the magnetic equator of the earth as explained earlier in this book. For example, the S pole magnetic energy of the earth goes into a Bloch Wall effect at the near center of the earth, where it changes to a negative or N pole energy that continues on to enter the N pole of the earth. Similarly, there is a two-way highway system with the N pole magnetic energy traveling to a magnetic equator, where it changes to a S pole energy and continues on the highway to the S pole.

Notice from the charts that two or more polarities can exist on one part of the body, such as the leg, hand and arm. The inside surface palm can be positive while the outer side of the hand is negative. Also, the fingertips' inside surfaces can be positive while the side that support the fingernails is negative. This system also applies to the arm, as both right and left arms and hands can be negative while the inside surface of hands and arms are positive.

The drawing on page 125 shows the location on the frontal human system where no noticeable voltage was registered. As stated earlier there are also two similar locations on the back view of the human system, one near the base of the spine and the other between the skull and backbone.

You will notice that these are separate voltage systems in each hand, arm, leg, even into the surface bone of the leg proper. This separate voltage system continues throughout the body system. For example, the more alkaline, such as the bones of the spinal column, a negative potential; while the more acid, such as the flesh, a positive potential.

We can generally summarize by saying the front of the body is negative and the back of the body is positive. These two natural and living electrical potentials, positive and negative, enter into magnetic equators at two locations on the front and back parts of the body, continuing out of these magnetic equators in their changed potential, a repeat process over and over throughout the human system. In this brief outline of the bioelectrical potentials found to exist in man there is evidence of human electrical and electromagnetic aura. The entire body of man is a field of continuing flowing electromagnetic energy, and the space emissions of this form of energy have been recorded.



THE PRESENT AND FUTURE RESEARCH INTO VERY HIGH GAUSS MAGNETIC ENERGIES (VHG)

While past and present research has shown little positive effects of VHG (Very High Gauss) energies to many biological systems, we should remember that the old concepts rule the science and its applications. We define old concepts to encompass the research understanding that both fields of a magnet are the same or homogeneous.

While it has been necessary for us to research the effects of the two pole effects using low to medium ranges of applied magnetic energies, we believe that with the basic understanding presented for the first time in this book concerning the two pole effects, with a greater understanding to overall effects, further significant discoveries will be made in the use of VHG (Very High Gauss).

Magnetic energy "Magneto Magnetic Energies" in the range of from 20,000 gauss to 100,000 gauss to much higher levels will effect total arrests of many diseases, such as all forms of cancers and other difficult complaints. We base this statement on new findings. These findings we believe will soon be released as fact within scientific releases coming from American and Puerto Rican researchers. Also, in this field of research will be releases of great international attention made by the Soviet Union's scientific research community. In this book we have stressed the importances of low to medium energies for the use of establishing the new concepts and laws of applied magneto magnetic physics necessary to understand this new and valuable science.

CONCLUSION

Man and all life forms are subject to a changing magnetic environment, and man should be educated to this fact at an early age. At the present this is not in the realm of primary instruction. Efforts should be forthcoming by responsible educators in the foreseeable future to bring about this better understanding of man and his environment. Nature plays the all-important role in man's existence on earth, yet we choose to manufacture artificial effects that override the balanced plans of nature.

Magnetism is a natural science. It is also a natural energy. This energy is generated by the nature of things, basically the atom itself. The earth is in fact a giant magnet. The energies provided affect all living systems on the face of the earth.

When we act to harness this form of natural energy, in making magnets that are artificial in that sense, we are duplicating nature's work by developing nature's natural energies. Then we discover that the basic and far-reaching approach in many fields, if not all fields of science, including the science of the medical arts, can be improved remarkably, by turning away from chemical reactions to a more normal and far more efficient use of controlled and proper directed magneto magnetic energies. Therefore, we hope this book will challenge the youth and the physicists of today, the scientific community as exploring scientists, to explore this new and exciting scientific probe, with a new outlook and new approach for a better world, the world of tomorrow.

ABOUT THE AUTHORS

ALBERT ROY DAVIS

Scientist, born in Halifax, Nova Scotia, Canada, June 18, 1915; parents, William Albert and Annie Agnes (Robinson), England. Came to United States, 1936; naturalized American citizen, 1936; attended University of Florida, 1936. Owner and manager, Albert Roy Davis Research Laboratory, Green Cove Springs, Florida, 1938—; writer technical papers radiological fallout, AEC, 1945-1946. Associate professor, biomagnetic sciences, Naihati (West Bengal, India) Research Center, 1964-1968; consultant to the board, 1965—; recipient of a number of honorary doctor degrees in science; Director of the Albert Roy Davis Aerial Phenomena Research Association and the United Science Federation, Green Cove Springs, Florida. Served under contract Air Transport Command, USAAF, Port Security division USCG, 1942-1943. Acknowledgment for work introducing biomagnetic sciences to scientists and doctors in India by Prime Minister, 1971; acknowledgment by industrialists in Japan on work to serve humanity through science of biomagnetics; author of many technical and scientific manuscripts on applied sciences, also over 370 general science courses used and adapted for grade schools, high schools and colleges in the United States and many nations of the world. Inventor. Developed methods of stimulation in milk products by application of magnetic fields and energies, 1965; methods in ecology studies to control nitrogen in water by biomagnetic molecular magnetic stimulation, 1969. Address: 520 Magnolia Avenue, Green Cove Springs, Florida 32043.

WALTER C. RAWLS, JR.

Scientist, lawyer, business executive, born in Richmond, Virginia, September 13, 1928; parents, Walter Cecil and Ella Town-

send (Freeman). University of Missouri, degree in arts and sciences, 1951; Juris Doctor degree, Washington University, St. Louis, Missouri, 1958; appointed by the Chancellor to permanent advisory committee, Washington University Law School, 1970—; Member of the Jacksonville, Florida, and American Bar Associations, International Bar Association, International Platform Association, Arbitrator for American Arbitration Association; Community Leader of America award, 1968; Trial Attorney, 1958-1969; Director, Georgia-Florida Oil & Refining Company, Inc., F.I.D. International, BioMagnetics International, Inc., Funds, Inc., Canvi-Andor, International Film Corporation, British West Indies Capital Reserves Ltd.; author of manuscripts in history and applied sciences. Awarded Honorary degree, doctor of science, 1973; acknowledged in national and international directories; married, Sheila (Kirsch), Doncaster, Yorkshire, England; sons, Richard Wayne and James David. Address: 6962 Almour Drive, Jacksonville, Florida 32217.

GENERAL RESEARCH REFERENCES

- H. S. Alexander, *Amer. J. Med. Electr.*, 1 (1962), 181
 M. F. Barnothy, ed., *Biological Effects of Magnetic Fields* (2 vols.; New York: Plenum Press, 1964 and 1969)
 G. M. Baule and R. McFee, *Am. Heart J.*, 55 (1963), 95
 D. Cohen, *Science*, 175 (1972), 664
 D. Cohen, E. A. Edelsack and J. Zimmerman, *Appl. Phys. Letters*, 16 (1970), 278
 R. Damadian, *Science*, 171 (1971), 1151
 A. d'Arsonval, *C. R. Soc. Biol.*, 48 (1896), 450
 L. D. Davis, K. Pappajohn and I. Plavnieks, "Bibliography of the Biological Effects of Magnetic Fields," *Fed. Proc.*, 21, Sup. 12, Part II (Sept. 1962), 1-38
 J. W. Devine and J. W. Devine, Jr., *Surgery*, 33 (1963), 4
 J. Driller, W. Casarella, T. Asch and S. K. Hilal, *Med. & Biol. Eng.*, 8 (1970), 15
 M. Eibschutz, *et al.*, *Nature*, 216 (1967), 1138
 M. Equen, *Magnetic Removal of Foreign Bodies* (Springfield, Ill.: Charles C. Thomas, 1957)
 M. W. Freeman, A. Arrot and J. H. L. Watson, "Magnetism in Medicine," *J. Appl. Phys.*, 31S (1960), 404
 E. H. Frei, *et al.*, *J. Appl. Phys.* 39 (1968), 999
 D. B. Geselowitz, *Biophys. J.*, 7 (1967), 1
 W. Gilbert, "De Magnete Magneticisque Corporibus et de Mango Tellure," *Physiol. Nova* (London: 1960)
 W. Haberditzl, *Nature*, 213 (1967), 72
 S. K. Hilal, W. J. Michelsen and J. Driller, *J. Appl. Phys.* 40 (1969), 1046
 G. C. Kimball, *J. Bact.* (1938), 109
 A. Kolin, "Evolution of Electromagnetic Blood Flowmeter," *UCLA Forum Med. Sci.* (1970)

- A. Kolin, *Physics Today*, 21 (Nov. 1968), 39
- M. M. Labes, *Nature*, 211 (1966), 968
- F. T. Luborsky, B. J. Drummond and A. Q. Penta, *Amer. J. Roentgen*, 92 (1964), 1021
- S. Maeshima, "Magnetic Healing Apparatus," U.S. Patent No. 1,421,516 (July 1922)
- J. Magrou and P. Manigault, *C. R. Acad. Sci.*, 233 (1946), 8
- R. McFee and G. M. Baule, *Proc. IEEE* 60 (1972), 290
- P. H. Meyers, F. Cronin and C. M. Nice, Jr., *Amer. J. Roentgen*, 90 (1963), 1068
- T. Nakamura, *et al.*, *J. Appl. Phys.* 42 (1971), 1320
- P. W. Neurath, *Biological Effects of Magnetic Fields* (New York: Plenum Press, 1969)
- L. A. Pirusian, *et al.*, *IZV. Akad. Science SSSR Biol.*, S4 (1970), 535
- A. S. Presman, *Electromagnetic Fields and Life* (New York: Plenum Press, 1970)
- A. Rosen, G. T. Inouye and A. L. Morse, *J. Appl. Phys.*, 42 (1971), 3682
- Symposium on Application of Magnetism in Bioengineering, *IEEE Trans. Magnetics*, MAG-6 (1970), 307-375
- J. A. Taren and T. O. Babrielsen, *Science*, 168 (1970), 138